

Your measurement solutions

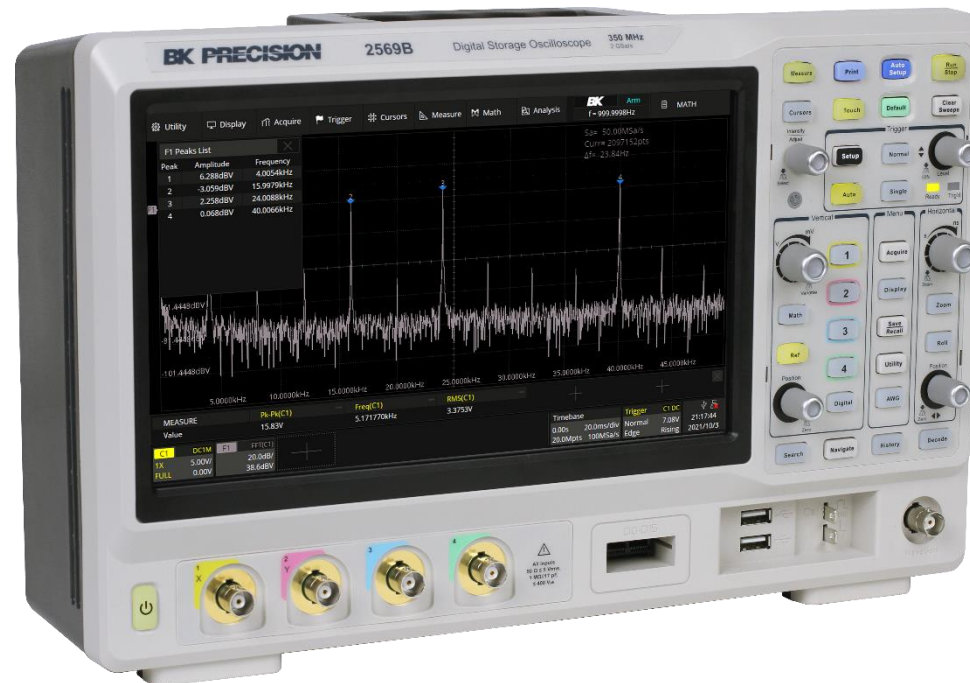


Sefram

BK PRECISION®

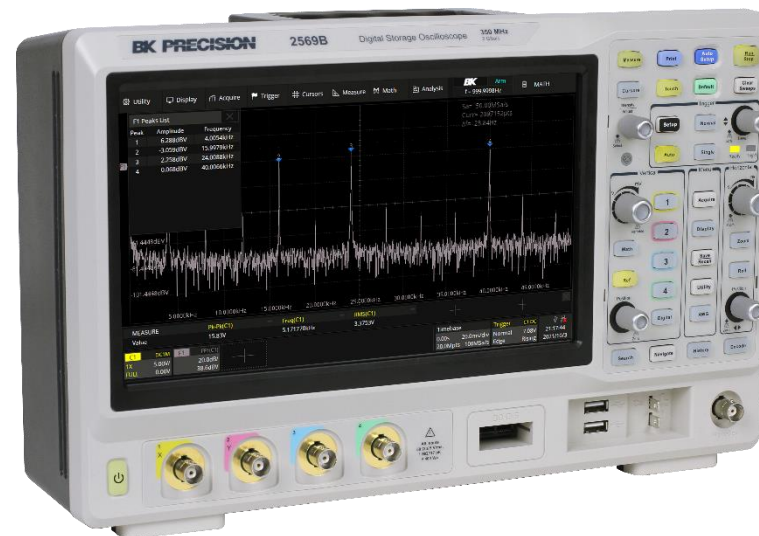
BK2560B Series

Digital Storage (DSO) and Mixed Signal Oscilloscopes (MSO)



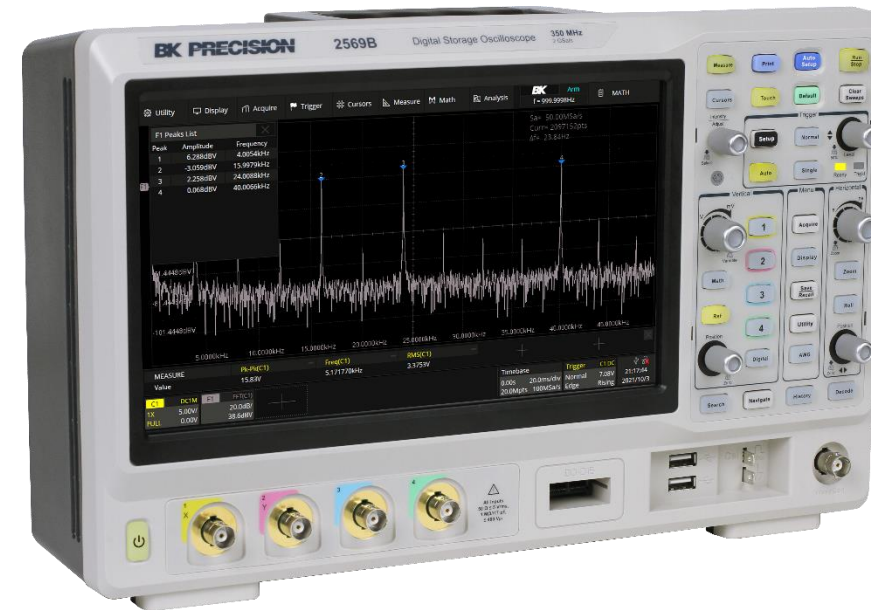
Choice guide

DSO Model	BK2565B	BK2567B	BK2569B
MSO Model	BK2565B-MSO	BK2567B-MSO	BK2569B-MSO
Bandwidth	100 MHz	200 MHz	350 MHz
Channels	4 Analog		



Overview

- Bandwidth up to **350 MHz**
- **4** analog channels
- Maximum sampling rate of **2 Gs/s**
- **200 Mpts** memory depth
- **10,1"** capacitive touchscreen supports touchscreen gestures
- Built-in **50 MHz** arbitrary waveform generator
- **10-bit** mode improves vertical resolution
- Automatic measurements with statistics and histogram
- Advance triggers with trigger zone support
- Power analysis tool evaluates 11 different parameters
- Math function supports 2 traces and a formula editor
- Serial bus decoder supports I²C, SPI, UART, CAN et LIN
- PC software available to connect to through USBTMC-compliant device port or LAN



Front panel

Menu Bar

Access all feature and function settings by selecting a category from the menu bar.

10.1-inch Capacitive Touchscreen

Intuitive touchscreen gestures facilitate adjustment of waveform position and scale per division.



Advanced Triggering

ate the signal with advanced triggers including Edge, Slope, Pulse, Video (HDTV supported), Window, Interval, Dropout, Runt, Pattern and Serial.

Serial Bus Decoding

Edit serial bus decoding settings for I²C, SPI, UART, CAN and LIN. Additional protocols available with purchase of license key.

Arbitrary 50 MHz Waveform Generator Output

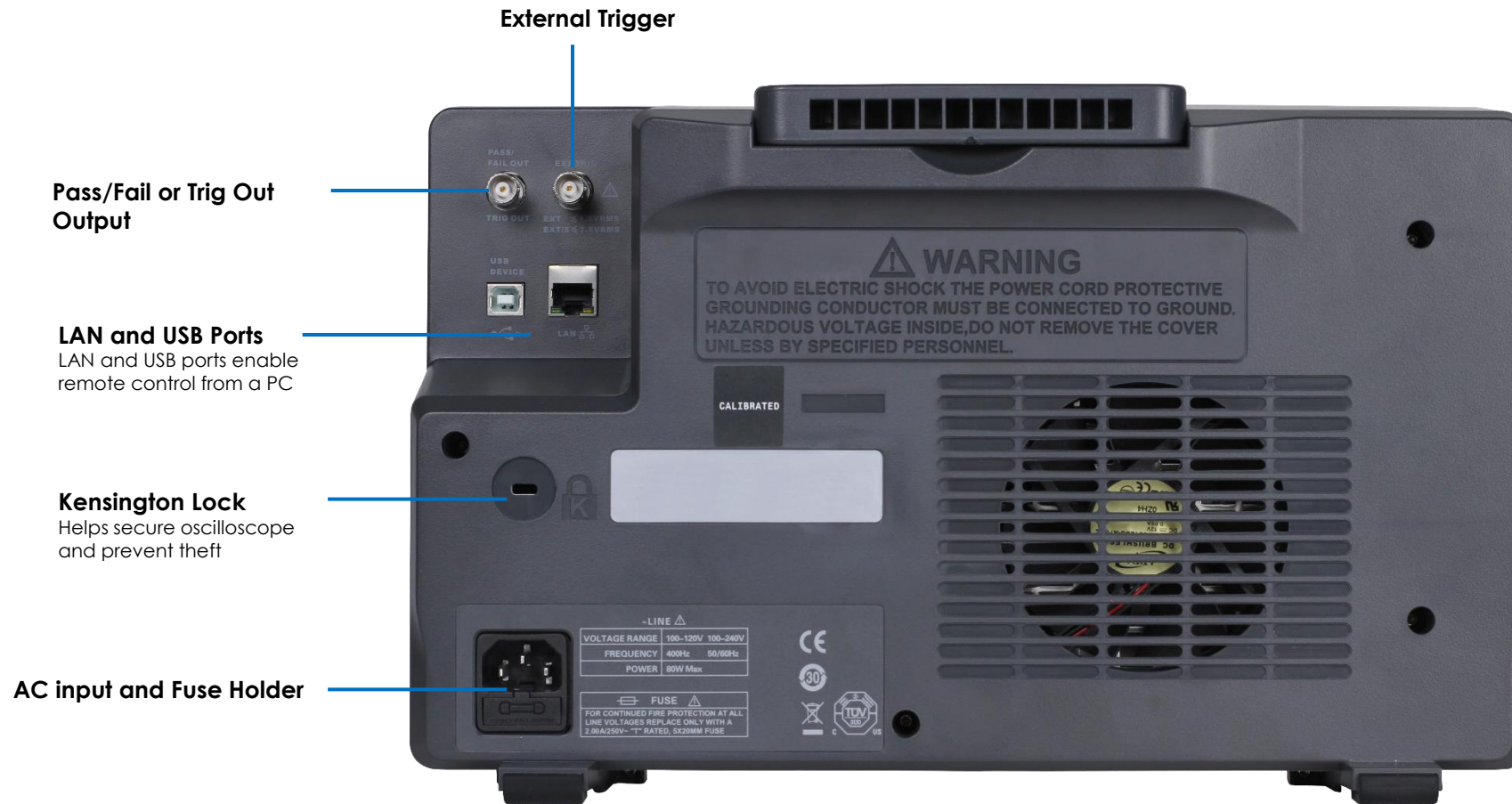
16-Channel Digital Port

Connect a logic analyzer probe to access 16 digital channels. Standard in MSO models and available as an upgrade for DSO models.

Two USB Host Ports

Connect USB flash drive to conveniently store and recall waveform data, setups and screenshots. Mouse and keyboard peripherals are supported as well.

Rear panel



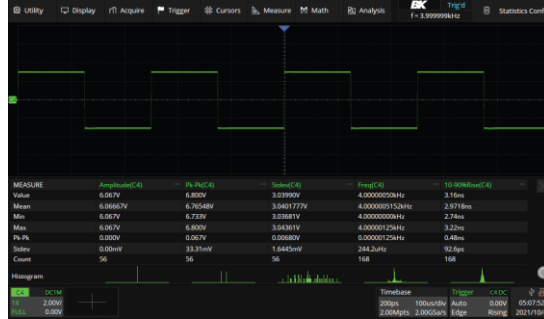
Operation highlights

Best-in-class memory depth of 200 Mpts



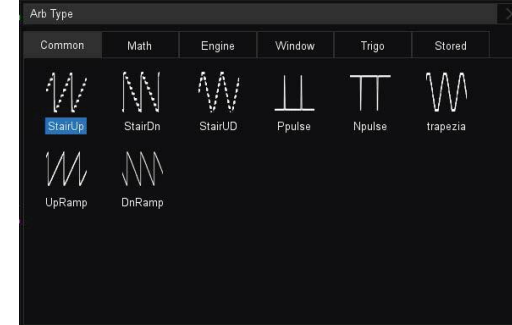
The oscilloscope's exceptionally deep memory allows you to capture waveform details over extended time intervals and at high sampling rates, then zoom into the signal for further analysis.

Waveform update rate of 120,000 wfms/s



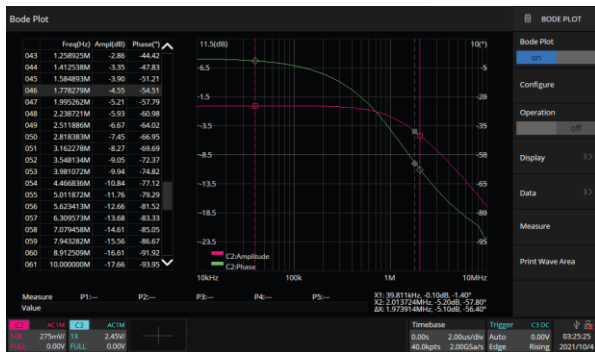
High speed waveform update rate displays infrequent glitches with excellent signal fidelity. Update rate can reach up to 500,000 wfms/s in sequence mode.

50 MHz waveform generator



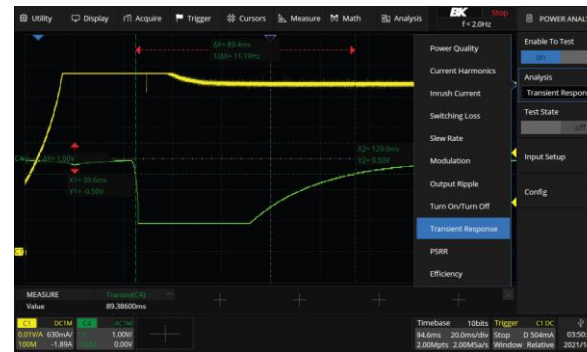
The built-in DDS waveform generator outputs waveforms with maximum frequencies of 50 MHz and ± 3 V amplitude. Sine, square, ramp, pulse, noise, DC and arbitrary waveforms are available.

Bode plot



The Bode plot feature evaluates the amplitude and phase of a system with respect to frequency. Samples acquired are displayed in a graphical and tabular form.

Power analysis



The power analysis tool can evaluate 11 different power supply or power device parameters such as power quality, inrush current and switching loss.

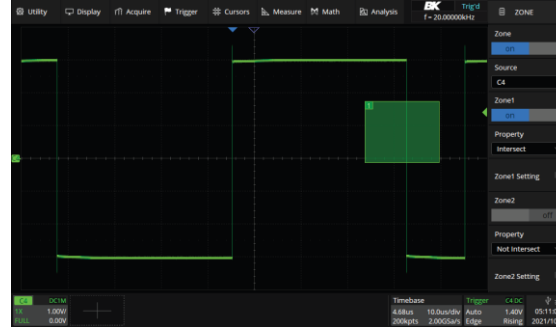
Operation highlights

Measurements with statistics and histograms



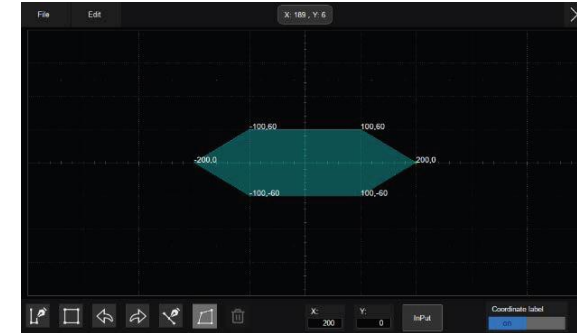
50+ different parameters are readily available with statistics displayed nominally and as a histogram. Measurements can be acquired from function, reference and history waveforms.

Trigger functions and zone



Isolate desired waveforms using up to two zone triggers. Touchscreen gestures allow users to generate zones by dragging a finger diagonally anywhere on the grid.

Mask test function and editor



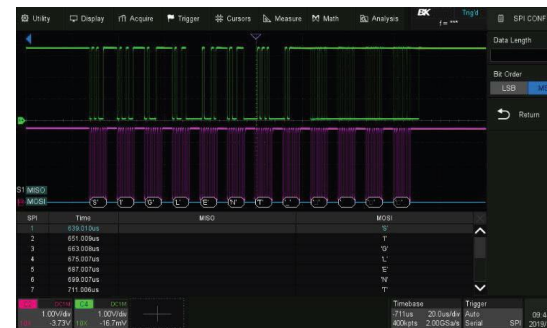
Use the built-in mask editor to create a mask and perform up to 80,000 pass / fail decisions per second. Failed frames can be stored as history frames for evaluation.

Digital Channels/ MSO



The MSO feature adds 16 digital channels allowing the acquisition and triggering of mixed signal waveforms.

Serial bus decoding



Serial bus decode supports I2C, SPI, UART, CAN, and LIN protocols. Information is displayed in tabular form.

The tools you need

High bandwidth passive oscilloscope probe

Model	BK2565B	BK2565B-MSO	BK2567B	BK2567B-MSO	BK2569B	BK2569B-MSO
Probe	PR150B		PR250B		PR500B	
Bandwidth	Four oscilloscope probes 150MHz		4 Four oscilloscope probes 250MHz		4 Four oscilloscope probes 500 MHz	
Attenuation Value	x1, x10		x10		x10	



The tools you need

16 channel logic probe

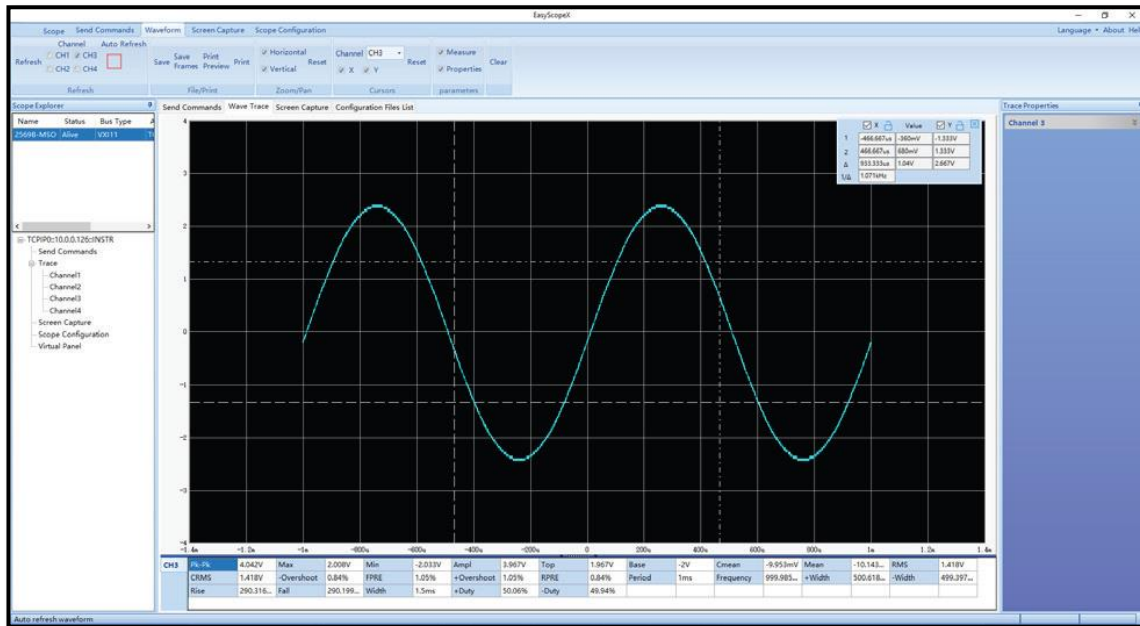
The 16-channel color-coded logic probe consists of two eight-channel pods. To make contact with the DUT, the probe connects directly to square pins or clips to test points using the included grabbers. With an input capacitance of only 18 pF and 100 k Ω input impedance, the probe protects the integrity of your signal. The probe is included with MSO models.



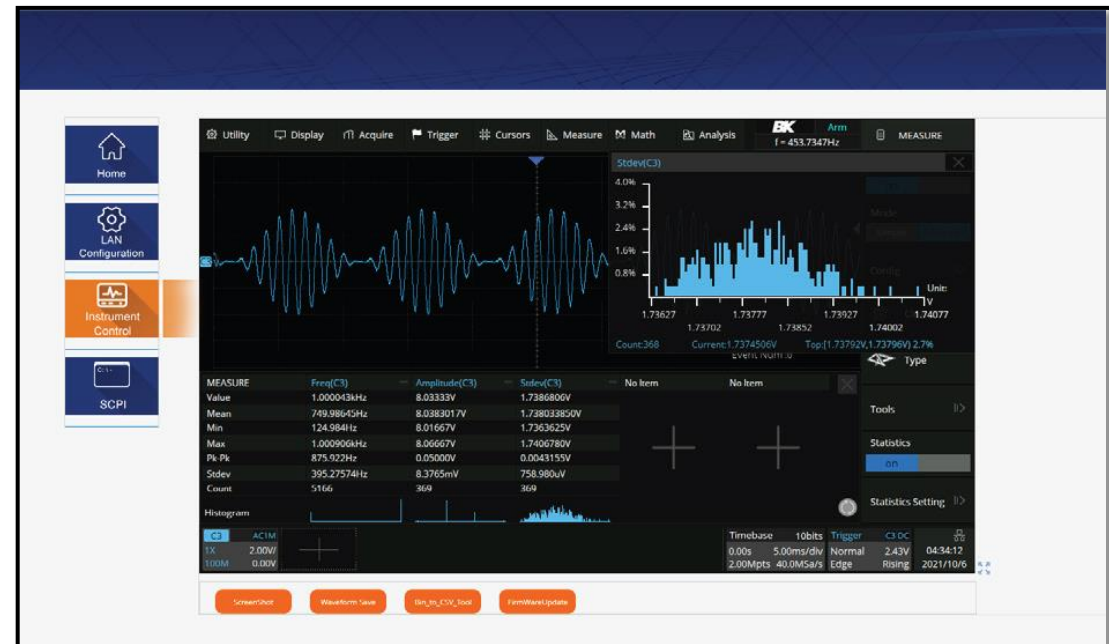
The tools you need

Remote connectivity

Operate the oscilloscope from a remote PC using either the built-in web server or free operating software available on our website.



The built-in web server provides full access to all the oscilloscope's functions and allow users to install new firmware updates and save screenshots, waveform setup and data. Access the web server through any device on the same network using the oscilloscope's IP address. For safety and security, control of the instrument through the web server can be password protected.







Ordering information

Install the MSO and decode licenses at any time or try before you buy with the 30 day trial license on each model. Any DSO model in the 2560B Series can be upgraded to an MSO. Installation is quick and easily done within the oscilloscope menu. To purchase a license key, please fill out the license request form or visit the 2560B Series accessories page.

Model Number	Description	Series DSO Model	Series MSO Model
LP2560	16 channel digital logic probe	Optional	Standard
LP2560B	Logic analyzer license	Optional	Standard
CFD2560B	CAN FD license	Optional	Optional
FR2560B	FlexRay license	Optional	Optional
I ² S2560B	I ² S license	Optional	Optional
MSI2560B	MIL-STD-1553B license	Optional	Optional
SM2560B	SENT and Manchester license	Optional	Optional

Comparison guide

Company	B&K Precision						Keysight		Rohde & Schwarz		
Series	BK2560B Series			2560 Series			InfiniiVision 2000 X		RTB2000		
											
Model	BK2565B(-MSO)	BK2567B(-MSO)	BK2569B(-MSO)	BK2565(-MSO)	BK2567(-MSO)	BK2569(-MSO)	DSO/MSOX2014A	DSO/MSOX2024A	RTB2004-B241	RTB2004-B242	RTB2004-B243
List Price, DSO Models	2 050 €	2 700 €	3 800 €	1 850 €	2 200 €	2 950 €	2 442 €	2 948 €	2 360 €	2 880 €	3 860 €
List Price, MSO Models	2 650 €	3 300 €	4 400 €	2 390 €	2 800 €	3 690 €	3 529 €	3 725 €	3 135 €	3 290 €	4 635 €
Bandwidth	100 MHz	200 MHz	350 MHz	100 MHz	200 MHz	300 MHz	100 MHz	200 MHz	100 MHz	200 MHz	300 MHz
Analog Channels	4			4			4		4		
Sample Rate (analog channels, interleaved)	2 GSa/s			2 GSa/s			2 GSa/s		2.5 GSa/s		
Memory Depth (interleaved)	200 Mpts			140 Mpts			1 Mpts		20 Mpts		
Waveform Update Rate	120,000 wfms/s (Normal Mode)			140,000 wfms/s (Normal Mode)			200,000 wfms/s		50,000 wfms/s (Normal Mode)		
Display	10.1" TFT, 1024 x 600			8" TFT, 800 x 480			8.5" TFT, 800 x 480		10.1" TFT, 1280 x 800		
Vertical Resolution (hardware)	8-bit			8-bit			8-bit		10-bit		
MSO	16 digital channels			16 digital channels			8 digital channels		16 digital channels		
Sample Rate (Digital Channels)	500 MSa/s			500 MSa/s			1 GSa/s		1.25 GSa/s		
Memory Depth (Digital Channels)	50 Mpts/ch			14 Mpts/ch			500 kpts/ch		10 Mpts/ch		
Arbitrary Waveform Generator	Standard (50 MHz)			250€ (25 MHz)			485€ (20 MHz)		490€ (50 MHz)		
Features											
FFT	2 Mpts			16 kpts			64 kpts		128 kpts		
Touchscreen	✓			-			-		✓		
History and Segmented Memory	✓			✓			✓		Option + \$845		
Power Analysis	✓			-			-		-		
Bode Plot	✓			-			-		Option + \$630		
Trigger zones	✓			-			-		-		
I2C, SPI, UART, CAN and LIN Bus Decoding	✓			Option + 400€			Option + 450€		Option + \$1560		
General											
User Interface	USB device, USB host (x2), LAN			USB device, USB host (x2), LAN			USB device, USB host (x2)		USB device, USB host, LAN		
Dimensions (L x H x W)	13.8" x 4.4" x 8.8" (352 x 224 x 111 mm)			13.8" x 5" x 8.8" (352 x 224 x 128 mm)			15" x 8" x 5.6" (381 x 204 x 142 mm)		15.4" x 8.7" x 6.0" (390 x 220 x 152 mm)		
Weight	8.6 lbs (3.9 kg)			7.9 lbs (3.6 kg)			8.6 lbs (3.9 kg)		5.5 lbs (2.5 kg)		
Warranty	3 years			3 years			5 years		3 years		

SEFRAM

32, rue E. Martel – BP55
F42009 – Saint-Etienne Cedex 2
France

Phone : **0033 4 77 59 01 01**



[Our LinkedIn page](#)

Site web : www.sefram.com



[Our Tweeter page](#)

E-mail : sales@sefram.com



[Our YouTube channel](#)