

GMC-I Driver Control

Software for the Installation of Device Drivers
for Devices and Adapters of GOSSEN METRAWATT

3-349-614-03
6/2.16



1 Information on Application 2

2 System Requirements 2

2.1 Hardware2

2.2 Operating System2

2.3 Supported Devices2

3 Installation under Windows XP 3

3.1 Driver Installation on your PC3

3.2 Initial Hardware Startup5

4 Installation (as from Windows Vista) 6

4.1 Driver Installation on your PC6

4.2 Initial Hardware Startup7

5 Product Support 8

2 System Requirements

Prerequisites for you PC with regard to hardware and operating system are listed in concrete terms in the following subsections.

2.1 Hardware

- Processor and RAM see minimum system requirements of the respective operating system
- VGA monitor with a resolution of at least 1024 x 768 pixels
- Hard disk with at least 10 MB available memory capacity
- Mouse and keyboard
- One or more USB ports

2.2 Operating System

- Windows XP, Windows Vista, Windows 7 or 8

2.3 Supported Devices

GMC-I Driver Control as from version 1.17 supports the following devices:

Adapters and Modules for Test Instruments and Controllers

- IrDa-USB Converter for test instruments with a serial port
(e. g. for PROFITEST 0100SII / C, METRISO C and GEOHM C)
- RS232-USB R2500/R2700
- SECUSTORE
- SECUTEST SI+

Testers

- SECUTEST BASE(10)
- SECUTEST PRO
- MINITEST 3P MASTER
- MINITEST MASTER
- MINITEST PRO
- PROFITEST M
- SECULIFE SR
- METRISO G1000+

Multimeter

- METRAport 40 USB
- USB-METRAHIT 2x
- USB-METRAHIT X-TRA

Laboratory Power Supplies

- SYSKON P500
- SYSKON P800
- SYSKON P1500
- SYSKON P3000
- SYSKON P4500

These operating instructions describe the program GMC-I Driver Control as from version 1.17.

1 Information on Application

All of the steps necessary for setting up USB drivers for instruments of GMC-I Messtechnik GmbH, are described in this document.

The system requirements are listed in the following chapter.

The installation of the device drivers is described under section 3 for Windows XP. The instructions for Windows Vista and subsequent versions are included in section 4.

Install GMC-I Driver Control



Set up Device Drivers

(automatic during initial startup after connecting the device with the USB interface of the PC)



Connect the Test Instrument



Exchange Data

e. g. ETC (Electric Testing Center)

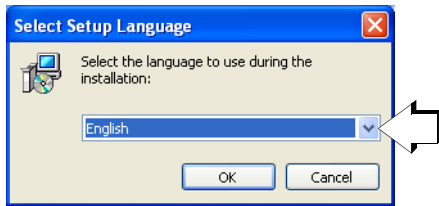
3 Installation under Windows XP

GMC-I Driver Control software can be downloaded from Gossen Metrawatt's website at:

<http://www.gossenmetrawatt.com>
→ Products → Software → Software for Testers
→ Utilities → **Driver Control**

The ZIP file can be unpacked in any desired directory. The setup file then appears in the directory. Installation is started by double clicking the setup file. A wizard guides you through the installation procedure.

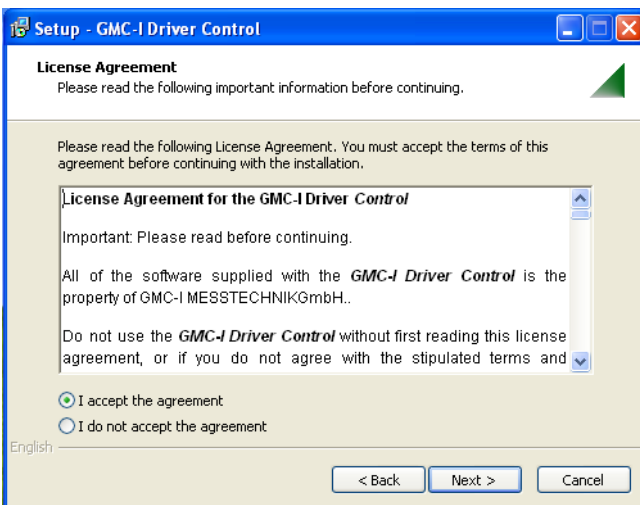
3.1 Driver Installation on your PC



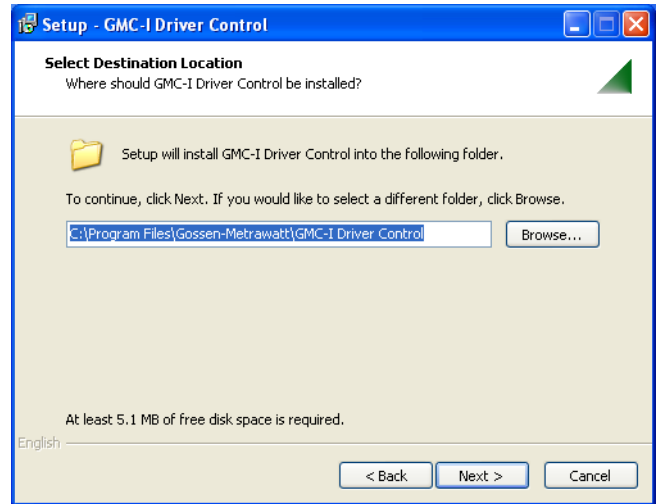
- ⇒ First select the desired language and acknowledge by clicking the "OK" button.



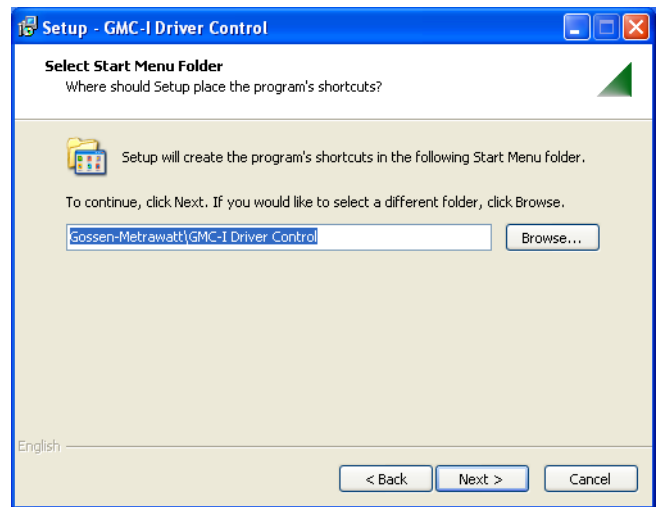
- ⇒ Then click the "Next" button.



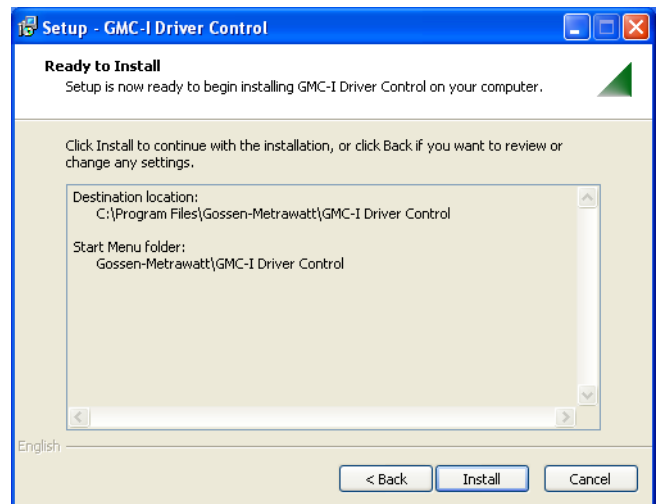
- ⇒ Read the agreement.
- ⇒ If you accept, click the „Next“ button.
Now accept the agreement and click the "Next" button again.



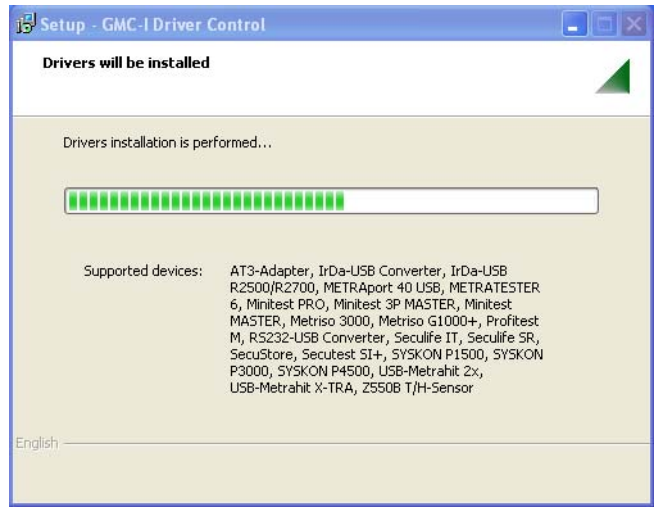
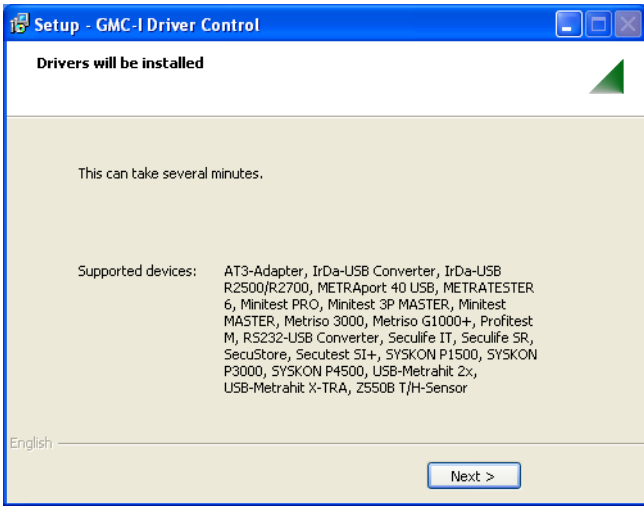
- ⇒ Then click the „Next“ button.



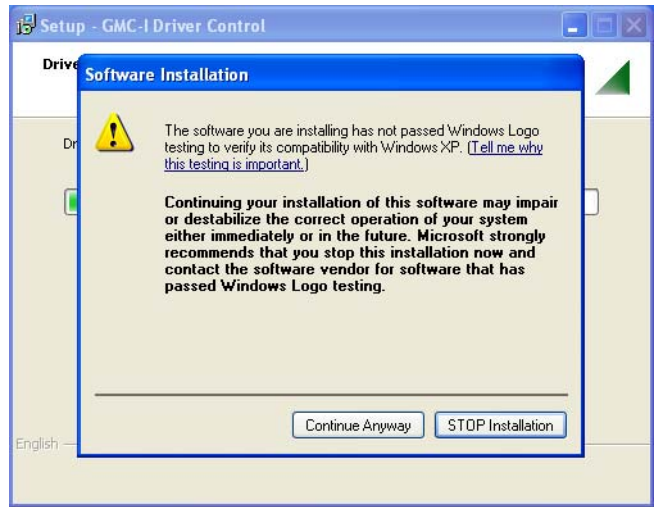
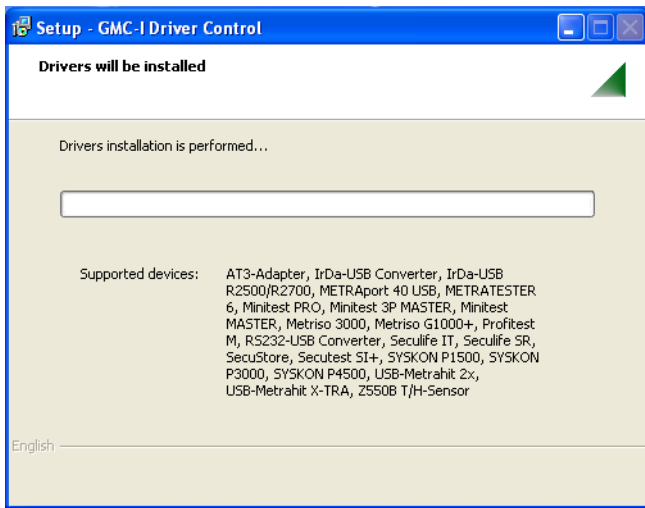
- ⇒ Then click the „Next“ button.



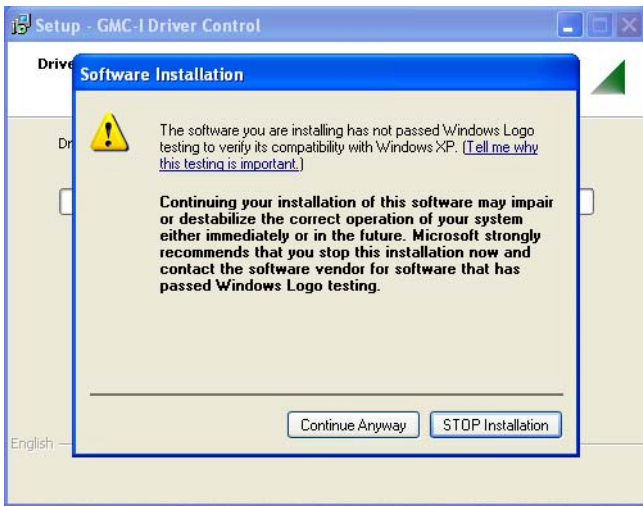
- ⇒ Then click the „Install“ button



⇒ The drivers will be installed, as soon as you click the „Next“ button.



⇒ Confirm „Continue Anyway“.



⇒ Confirm „Continue Anyway“.



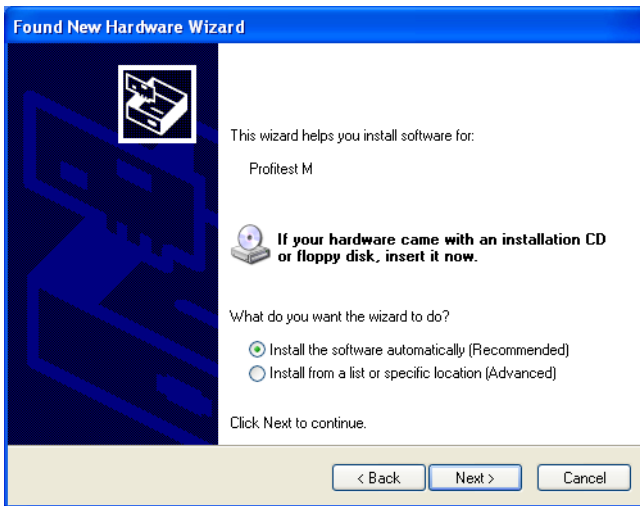
⇒ Click the „Finish“ button.

3.2 Initial Hardware Startup

As soon as you connect a supporting device with the USB interface of your PC, the installation of the matching device driver is launched.



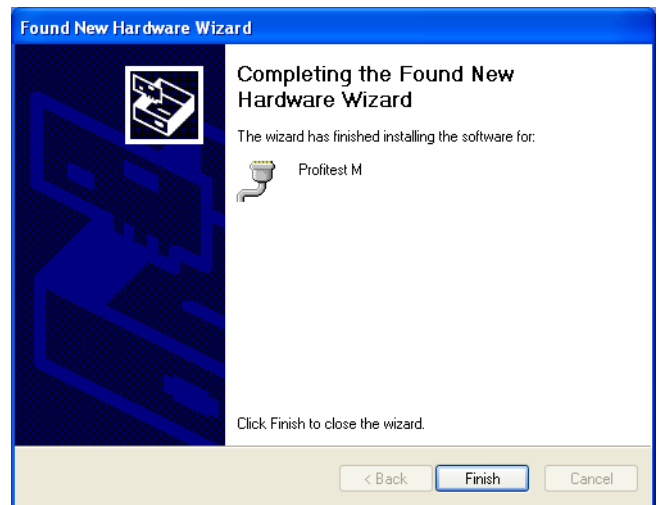
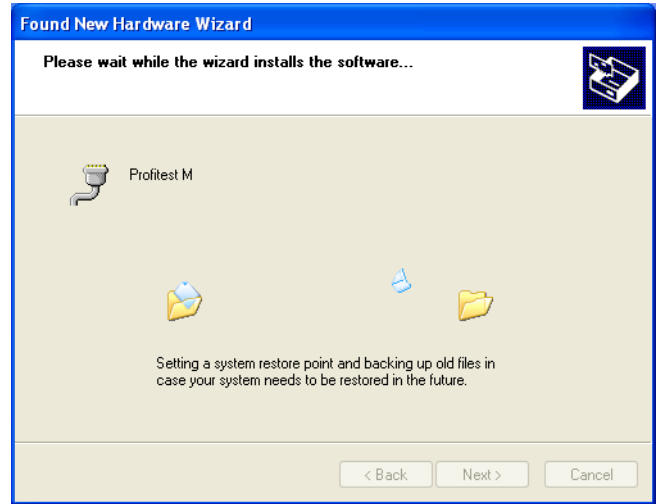
- ⇒ Select option „No, not this time“ and confirm with „Next“.



- ⇒ Select option „Install the software automatically (Recommended)“ and confirm with „Next“.



- ⇒ Confirm „Continue Anyway“.



- ⇒ Click the „Finish“ button.

4 Installation (as from Windows Vista)

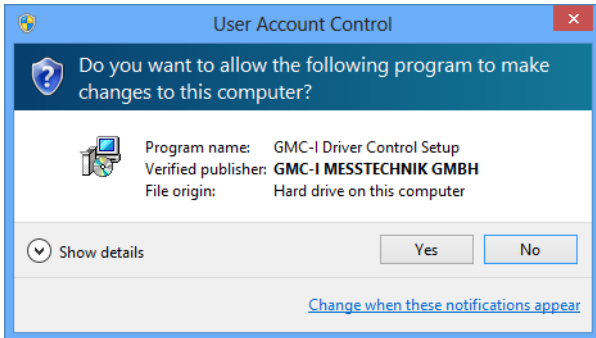
GMC-I Driver Control software can be downloaded from Gossen Metrawatt's website at:

<http://www.gossenmetrawatt.com>
→ Products → Software → Software for Testers
→ Utilities → **Driver Control**

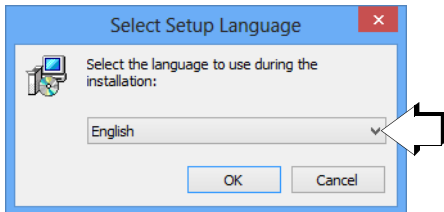
The ZIP file can be unpacked in any desired directory. The setup file then appears in the directory. Installation is started by double clicking the setup file. A wizard guides you through the installation procedure.

The installation routine is described in the following using Windows 8 as an example.

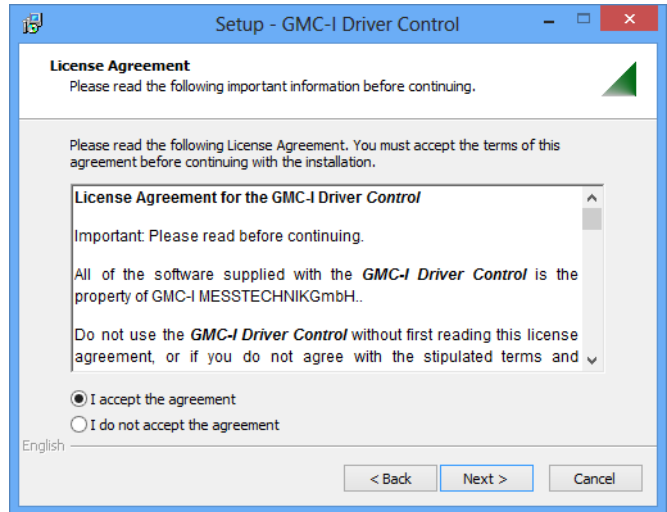
4.1 Driver Installation on your PC



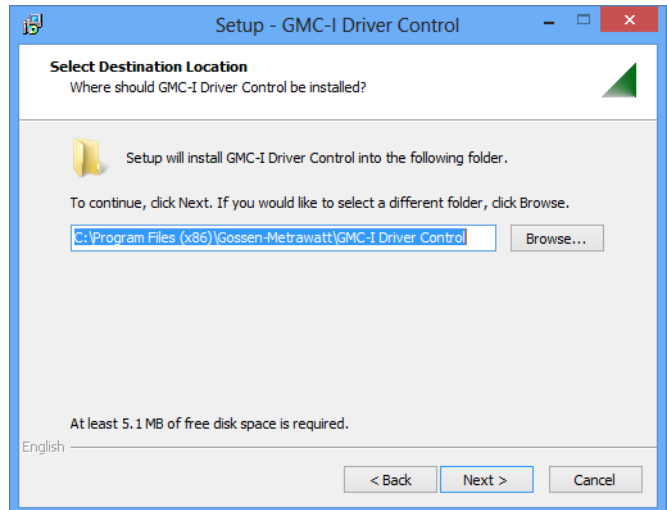
- ⇒ Accept and click the „Next“ button.



- ⇒ First select the desired language and acknowledge by clicking the „OK“ button.



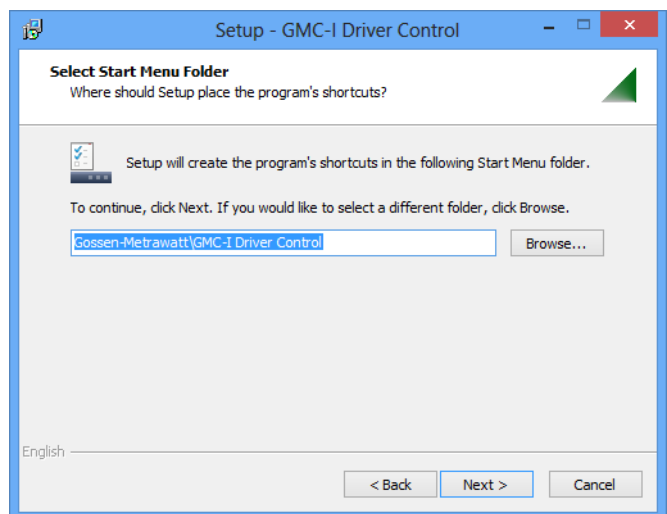
- ⇒ Read the agreement.
- ⇒ If you accept, click the „Next“ button.



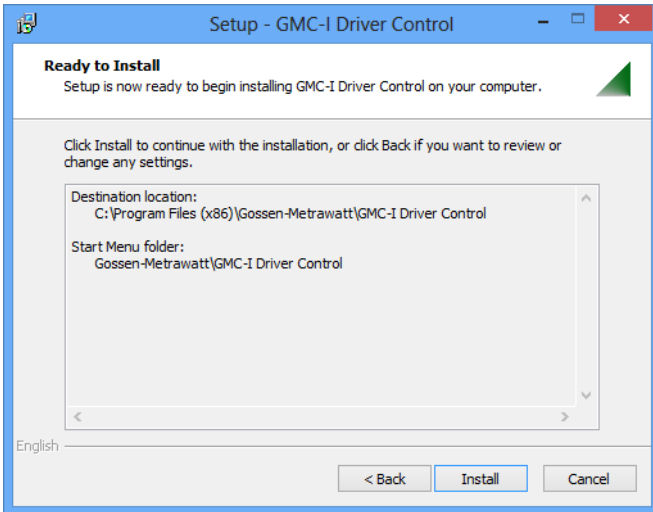
- ⇒ Then click the „Next“ button.



- ⇒ Then click the „Next“ button.



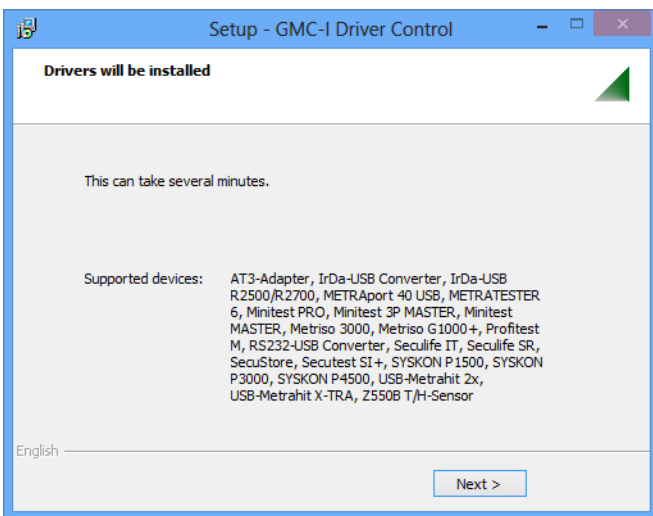
- ⇒ Then click the „Next“ button.



⇒ Then click the „Install“ button



⇒ Click the „Finish“ button.

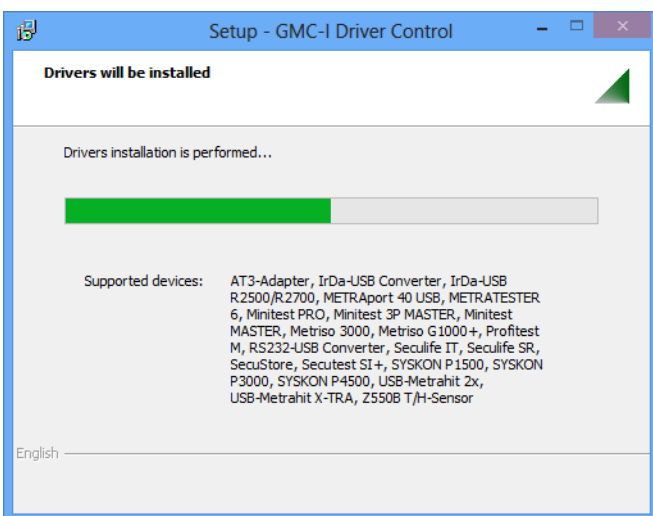


⇒ The drivers will be installed, as soon as you click the „Next“ button.

4.2 Initial Hardware Startup



As soon as you connect a supporting device with the USB interface of your PC, the installation of the matching device driver is launched.



The progress bargraph is shown.

5 Product Support

If required please contact:

GMC-I Messtechnik GmbH

Product Support Hotline

Phone +49 911 8602-0

Fax +49 911 8602-709

e-mail: support@gossenmetrawatt.com

Copyright © 2016 GMC-I Messtechnik GmbH

Duplication and/or forwarding of this document to third parties, as well as the use or transmission of its contents, are prohibited without prior express consent. Violators are liable for compensation of damages. All rights are reserved in the event of a patent grant or the registration of a utility model.

Edited in Germany • Subject to change without notice • PDF version available on the Internet

 **GOSSEN METRAWATT**

GMC-I Messtechnik GmbH
Südwestpark 15
90449 Nürnberg • Germany

Phone: +49 911 8602-111
Fax: +49 911 8602-777
e-mail: info@gossenmetrawatt.com
www.gossenmetrawatt.com