

DOBLE ON-LINE MONITORING

doblePRIME i0

Multi-Function Data Recorder

INTEGRATES & DISPLAYS DATA FROM MULTIPLE SENSORS & SOURCES

The doblePRIME i0 is a device that accepts current, voltage, temperature and relay inputs to your doblePRIME system. Data sources include load or operational data, tap position indicators, inputs from other vendor devices, and more. The doblePRIME i0 can act as a standalone monitoring device, taking direct sensor inputs. It also interfaces with doblePRIME modules and other systems.

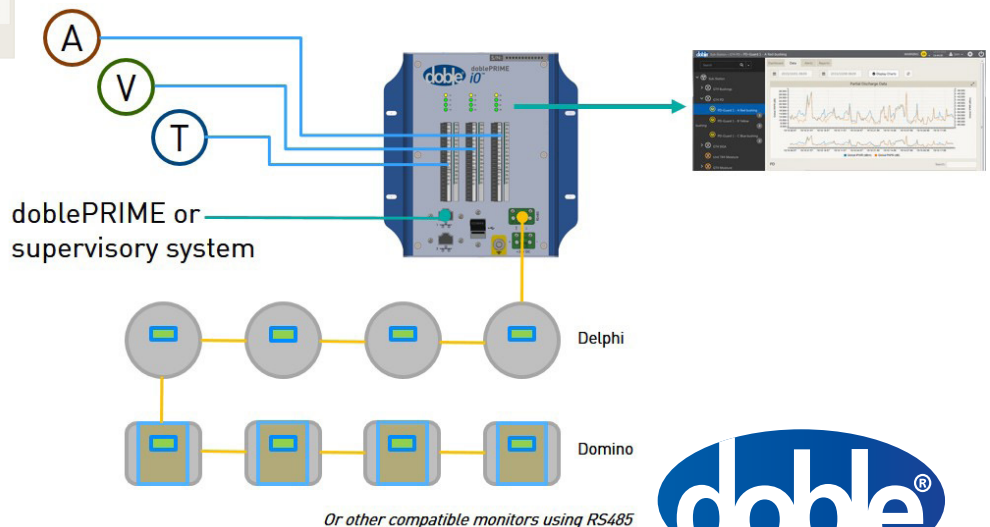
No proprietary software or cloud connections are required. Data is accessed locally or remotely via an intranet or external network connection, in line with applicable security policies; a local Wi-Fi connection is also available if required.



FEATURES

- Multiple analog/digital inputs, including currents, voltages, and temperature sensors
- Provides a means to record operational parameters and data
- Stores and displays data via the doblePRIME user interface
- View dashboard via mobile phone, tablet or PC; no cloud connection required
- Fully networkable
- Ethernet, USB and RS485 interfaces
- Modbus and DNP3 communication protocols
(IEC 61850 available on request)

NETWORK SCHEMATIC EXAMPLE



doublePRIME iO TECHNICAL SPECIFICATIONS

DATA ACQUISITION	
Inputs	Options include: 16 DI; 6 DI & 6 Relay; 8 AI; 4 AO; 4DI, 4 DIO, 4 AI; 6 RTD <i>Consult Doble for specific requirements.</i>
Connector	Screw terminal

CPU, MEMORY AND BUSES	
Host CPU	ARM11 700MHz
Memory	512MB RAM, 4GB Flash

STORAGE	
4GB eMMC Flash for application & data storage	

PERIPHERALS	
USB 2.0	
Isolated RS485 (Modbus RTU Master/Slave or DNP3 Master/Outstation)	
10/100 BaseT Ethernet (DNP3, Modbus TCP, HTTP, WebDAV Server)	

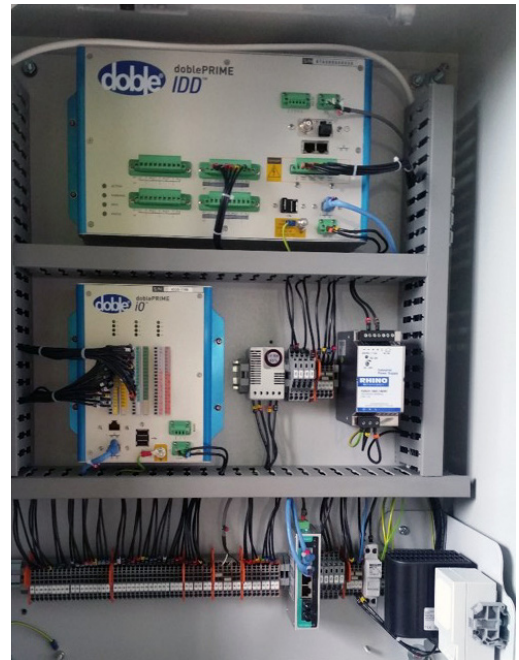
ENVIRONMENTAL	
Humidity	0-95% non-condensing

TEMPERATURE	
Operating temperature	-20°C to +50°C
Storage temperature	-20°C to +70°C

MECHANICAL DATA	
Height	200mm / 7.9 in
Width	153mm / 6.0 in
Depth	82mm / 3.2 in
Weight	1.5kg / 3.3 lbs
Construction	Anodized aluminum

MOUNTING OPTIONS	
Panel mount DIN Rail Rubber feet	

POWER SUPPLY	
External supply	24 V DC @ 1 A
An optional power adapter can be supplied to suit global mains voltage	
<i>Ask about complete enclosure solutions with specific environment, network and power options.</i>	



doublePRIME INSTALLATION
In this example, this doublePRIME system includes a doublePRIME IDD and doublePRIME iO which are configured for true power factor with temperature compensation.

CONFIGURATION OPTIONS

Below are five standard configurations that cover most common applications.

	16 DI	6 DI 6 RELAY	8 AI	4 AO	4 DI 4DIO 4 AI	6 RTD
1			✓			✓✓
2		✓	✓			✓
3			✓		✓	✓
4			✓	✓		✓
5	✓		✓		✓	



Doble Engineering Company
 Worldwide Headquarters
 85 Walnut Street, Watertown, MA 02472 USA
 tel +1 617 926 4900 | fax +1 617 926 0528
www.doble.com

Specifications are subject to change without notice.
 Doble is ISO certified.
 Doble is an ESCO Technologies Company.
 MKT_SL_doublePRIME_i0_12/16