

Feature Overview by Model

	PTi120	TiS20+ TiS20+Max	TiS55+	TiS60+	TiS75+	Ti300+	Ti401Pro	Ti480Pro	TiX501	TiX580	RSE300	RSE600
Focus-Free	•	•	•	•	•							
Manual focus			•		•							
Advanced manual focus						•	•	•	•	•		
LaserSharp™ autofocus						•	•	•	•	•		
MultiSharp™ focus								•		•	•	•
Remote focus											•	•
IR-Fusion® technology	• (No PIP)	• (No PIP)	•	•	•	•	•	•	•	•	•	•
Super Resolution								•		•		
Digital Zoom								•	•	•	•	•
Color alarm			•	•	•	•	•	•	•	•	•	•
Dew-point alarm					•							
Text notes	•	•	•	•	•	•	•	•	•	•		
IR-PhotoNotes			•	•	•	•	•	•	•	•		
Asset Tagging	•	•	•		•							
Voice annotation			•	•	•	•	•	•	•	•		
FC modules			•	•	•	•	•	•	•	•		
Non-radiometric video				•	•			•		•	•	•
Radiometric video					•			•		•	•	•
Auto Capture (time lapse)			•	•	•			•		•	•	•
Optional Lens						•	•	•	•	•	•	•

Spec overview by model (Portable)



PTi120



\$

TiS20+



\$

TiS55+



\$\$

TiS60+



\$\$

TiS75+



\$\$

Ti300+



\$\$\$

Ti401 PRO



\$\$\$

Ti480 PRO



\$\$\$\$

TiX501



\$\$\$\$

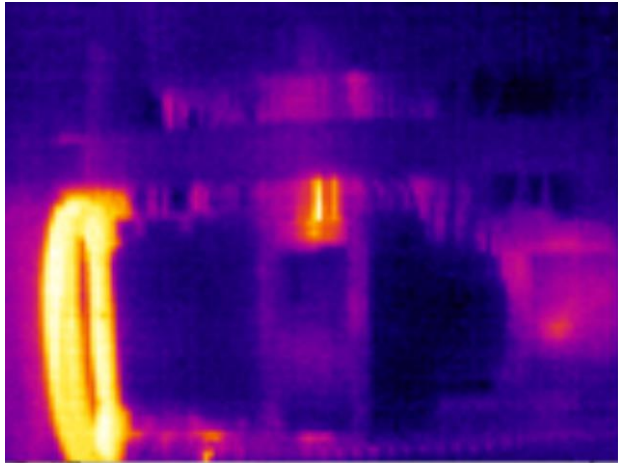
TiX580



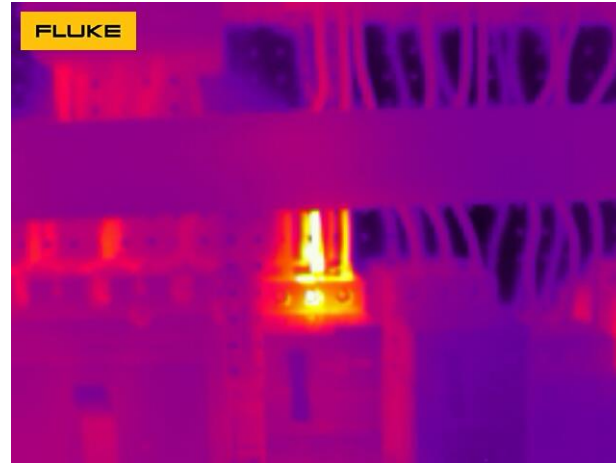
\$\$\$\$

IR Resolution	120 x 90	120 x 90	256 x 192	320 x 240	384 x 288	320 x 240	640 x 480	640 x 480	640 x 480	640 x 480
NETD	60mk	60mk	40mk	45mk	40mk	75mk	75mk	50mk	75mk	50mk
FOV	50°H x 38°V	50°H x 38°V	28°H x 20°V	34.1°H x 25.6°V	42°H x 30°V	34°H x 24°V	34°H x 24°V	34°H x 24°V	34°H x 24°V	34°H x 24°V
Ifov	7.6 mRad	7.6 mRad	1.91 mRad	1.86 mRad	1.91 mRad	1.85 mRad	0.93 mRad	0.93 mRad	0.93 mRad	0.93 mRad
Temp Range	-20 to 150°C	-20 to 150°C	-20 to 550°C	-20 to 400°C	-20 to 550°C	-20 to 650°C	-20 to 650°C	-20 to 1000°C	-20 to 650°C	-20 to 1000°C
Focus	Focus-free	Focus-free	Focus-free + Manual	Focus-free	Focus-free + Manual	Advanced manual+ LaserSharp	Advanced manual+ LaserSharp	Advanced manual+ LaserSharp	Advanced manual+ LaserSharp	Advanced manual+ LaserSharp
Display	3.5"	3.5"	3.5"	3.5"	3.5"	3.5"	3.5"	3.5"	5.7"	5.7"
Touchscreen	Yes	Yes	Yes	No	Yes	Yes	Yes	Yes	Yes	Yes
Battery	2 Hours	5 hours	3.5 hours	4 hours	3.5 hours	3 hours	3 hours	3 hours	3 hours	3 hours
Job Titles	<ul style="list-style-type: none"> Technician Electrician HVAC Contractor 	<ul style="list-style-type: none"> Technician Electrician HVAC Contractor 	<ul style="list-style-type: none"> Building Inspector Maintenance technician Electrical Contractor 	<ul style="list-style-type: none"> Building Inspector Maintenance technician Electrical Contractor 	<ul style="list-style-type: none"> Building Inspector Maintenance technician Electrical Contractor 	<ul style="list-style-type: none"> Maintenance engineer Thermography consultant 	<ul style="list-style-type: none"> Maintenance engineer Thermography consultant 	<ul style="list-style-type: none"> Building Inspector Maintenance manager Maintenance technicians 	<ul style="list-style-type: none"> Maintenance manager Operations Engineer R&D Professional 	<ul style="list-style-type: none"> Building Inspector Maintenance manager Operations Engineer R&D Professional

Image quality by camera model – 0.5 m, Electrical



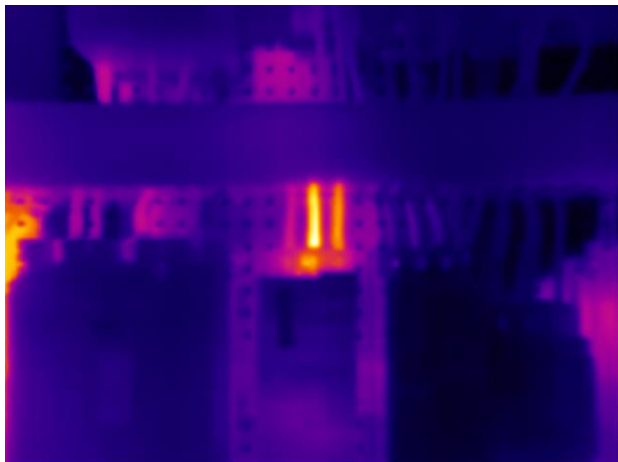
PTi120 TiS20+



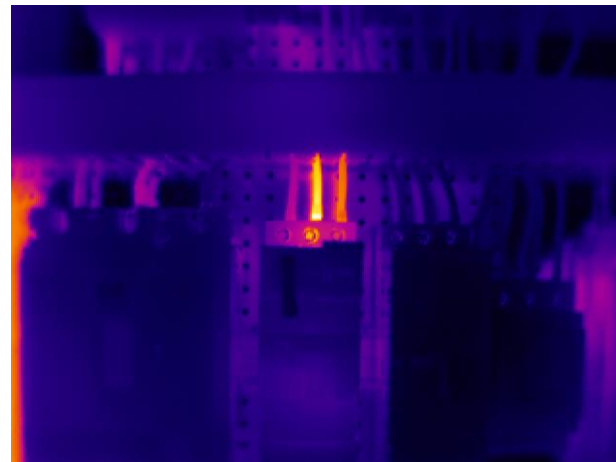
TiS55+



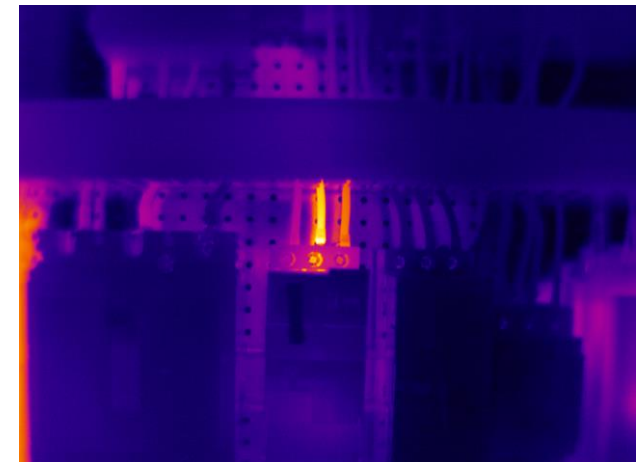
TiS75+



TiS60+



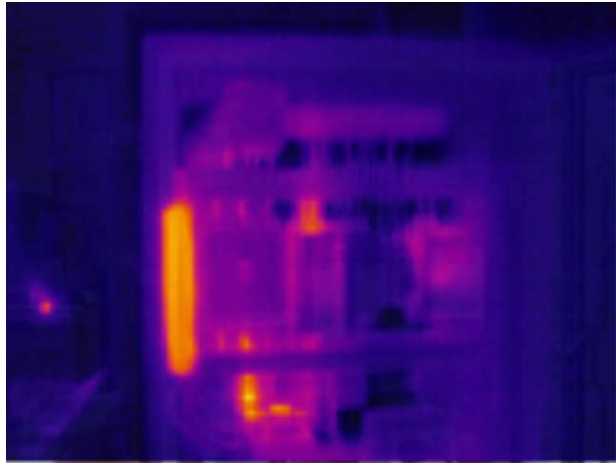
Ti300+



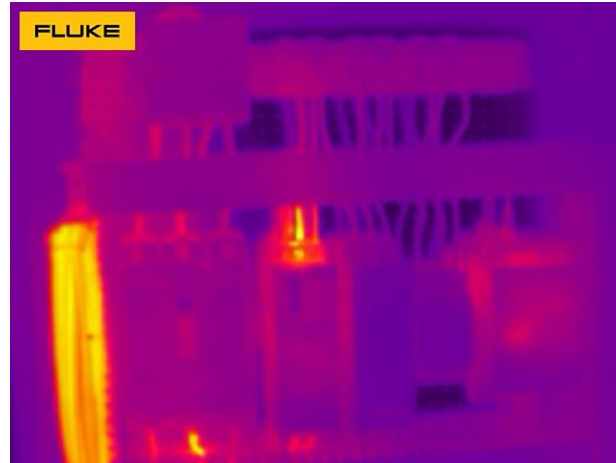
Ti401Pro

Image quality by camera model – 1 m, Electrical

FLUKE®



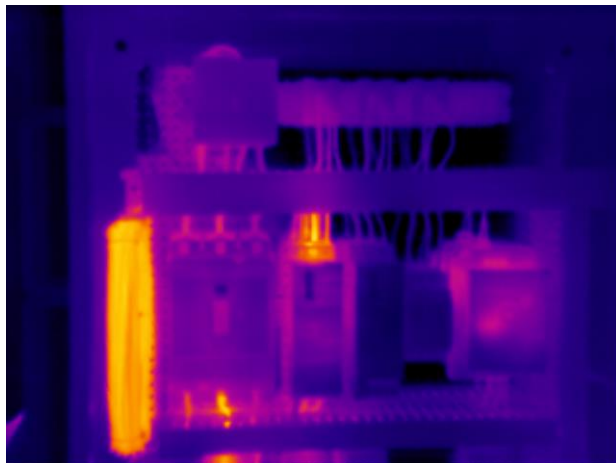
PTi120 TiS20+



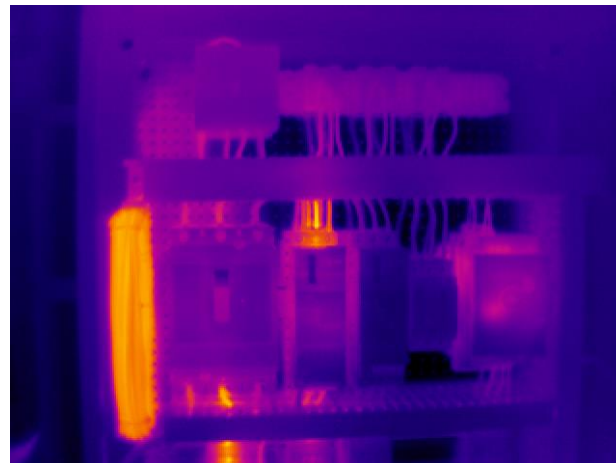
TiS55+



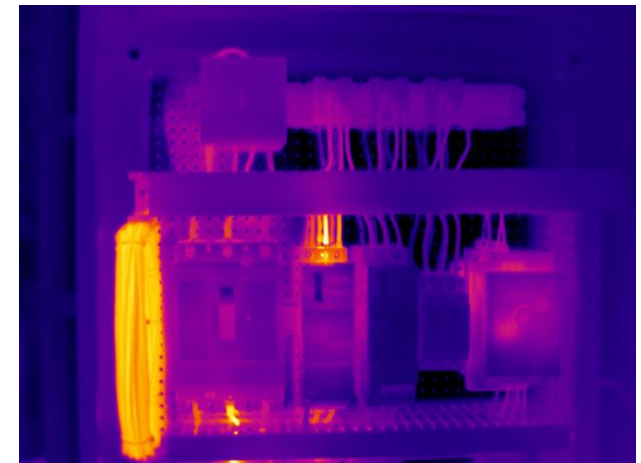
TiS75+



TiS60+



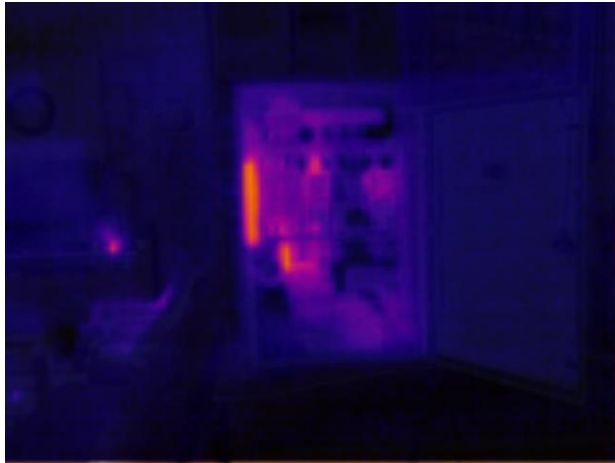
Ti300+



Ti401Pro

Image quality by camera model – 2 m, Electrical

FLUKE®



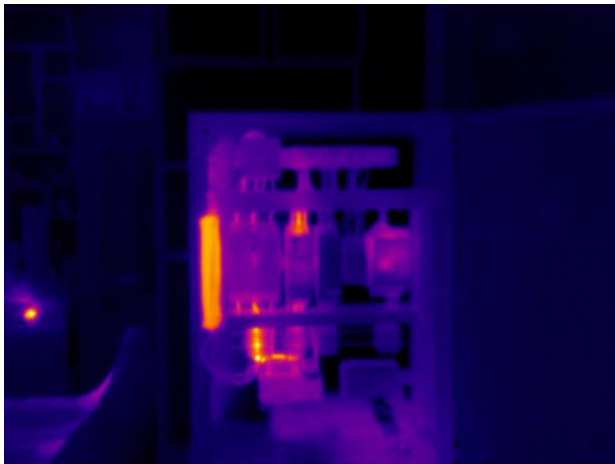
PTi120 TiS20+



TiS55+



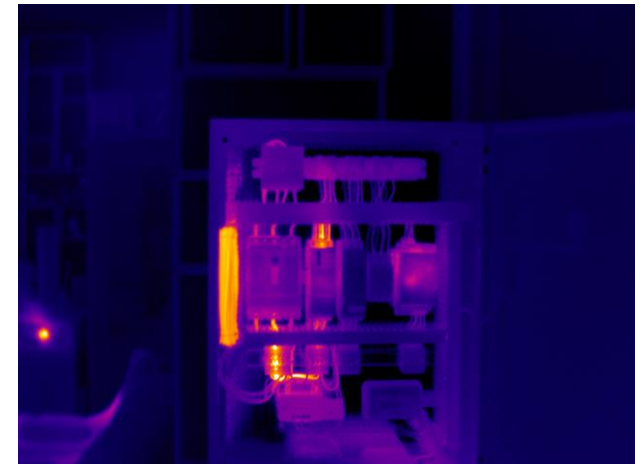
TiS75+



TiS60+

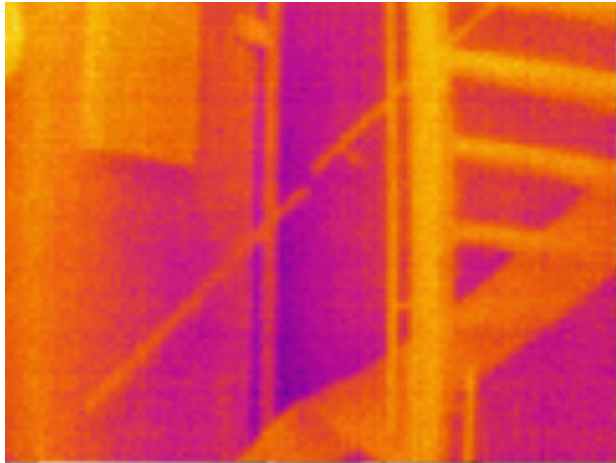


Ti300+



Ti401Pro

Image quality by camera model – 3 m, Building



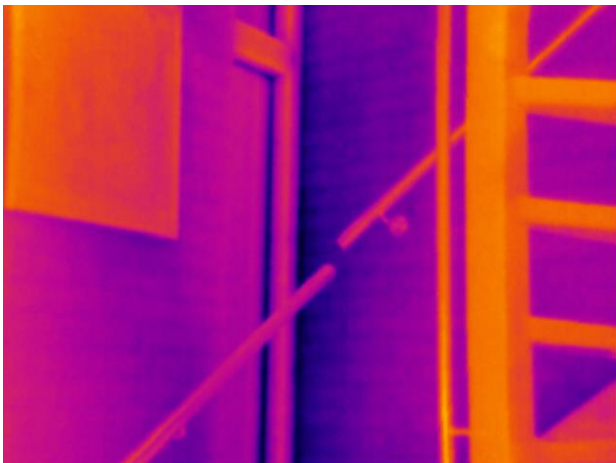
PTi120 TiS20+



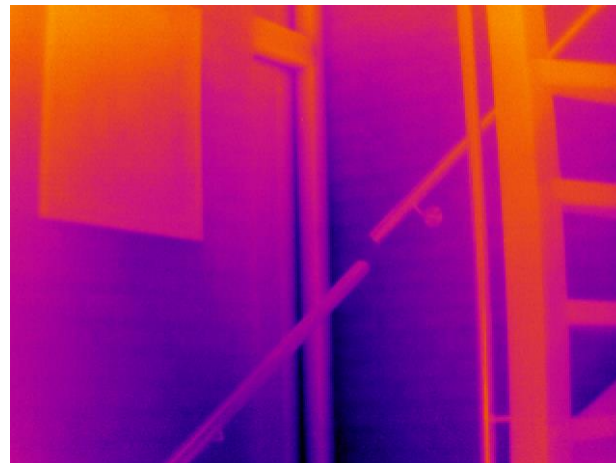
TiS55+



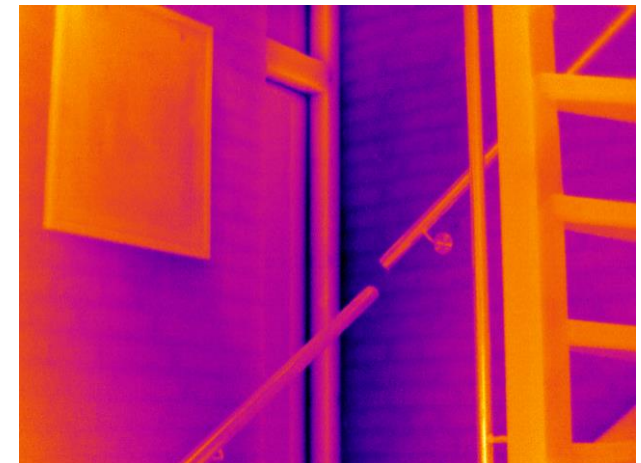
TiS75+



TiS60+



Ti300+



Ti401Pro