



Innovative Testing Tools for Electricians

Our products are sold by a global network of trusted partners with a professional support team at your service, making Beha-Amprobe the natural choice. Whether you need test and measurement tools for industrial, commercial or residential applications, Beha-Amprobe offers innovative test equipment to fit your needs.

Every tool undergoes rigorous testing in our lab and by certified third-parties to ensure the rugged durability, quality and safety you've come to expect from us. We offer a two year warranty on our test equipment.

From multimeters to voltage detectors, we are always improving on our designs to provide you with the very best quality in tools and support.

This catalog will give you a full-range of HVAC products, adapters and other products which makes your life as an electrician much easier. For our total product overview please visit our website beha-amprobe.com.

Electrical Testers			Adapters		
2100-Gamma	4709243	3	ADPTR-B15-EUR	4854873	14
LAN-1	3052401	4	ADPTR-B22-EUR	4854858	14
BAT-250-EUR	4620297	4	ADPTR-E14-EUR	4854864	14
Wire Tracers			ADPTR-E27-EUR	4854847	14
AT-7020-EUR	4542794	5	ADPTR-GU-10-EUR	4854886	14
AT-7030-EUR	4542782	5	ADPTR-KIT1-EUR	4854835	14
Underground Locators			ADPTR-PE-EUR	4854900	14
AT-3500	3435058	6	ADPTR-SCT-EUR	4854899	14
SC-3500	3435073	6	ADPTR-SCT-UK	4854820	14
MLS55-3	3435099	6	1235D	2145921	15
Environmental Testers			1236D	2145939	15
TMA5	3503169	7	1343D	3313514	15
TMA10A	2817785	7	DAA-16	2743806	15
TMA40-A	3477287	7	DAA-32	2743850	15
TMA-21HW	3730239	8	1142D	3313394	15
CM100	3311826	8	1240D	3313412	15
TX900	3390352	8	1241D	3313420	15
TMULD-300	2731543	9	1233D	2145900	15
LM-100	3052348	9	9080D	3530534	16
LM-120	3052353	9	Clamp Meters		
SOLAR-100	3474979	9	AMP-210-EUR	4560581	17
SM-10	3052366	10	AMP-220-EUR	4560596	17
SM-CAL1	3052382	10	AMP-310-EUR	4560603	17
SM-20A	3477333	10	AMP-320-EUR	4560615	17
TACH-10	3730008	11	AMP-330-EUR	4560626	17
TACH-20	3311961	11	ACD-14-PRO-EUR	4718989	18
TR300	3311844	11	ACD-20SW	3472723	19
TR200-A	3477302	11	ACD-23SW	3804941	19
IR-450-EUR	4308539	12	LH41A	3030898	19
TH-1	3311871	12	AMP-25-EUR	4588268	20
TH-3	3027060	12	Digital Multimeters		
THWD-3	3033042	13	AM-500-EUR	4102332	20
TPP1-C1	2826634	13	PM51A	2727700	21
TPP2-C1	2826652	13	PM55A	2727721	21
MT-10	3503178	13	AM-510-EUR	4102344	22
			AM-520-EUR	4131281	22
			AM-535-EUR	4701027	22
			AM-540-EUR	4131308	22
			AM-555-EUR	4701030	22
			Accessories		
			TM-SWA	3027085	23

2100-GAMMA

Voltage and continuity tester with phase sequence indication, resistance measurement and NCV

Functions

- Voltage test up to 1000 V alternating current and 1200 V direct current
- Digital LCD 12...1000 V AC/ 1200 V DC
- Measures resistance up to 1999 Ohm
- Optical and acoustic continuity and voltage test
- Low resistance continuity measurement <10...50 Ohm
- Patented phase rotation indicator, no 3rd hand required
- Single-pole phase test
- Polarity
- Non-contact voltage (NCV/EF) detection

Product information

- Switchable load (load tester) of 300 W at 1000 VAC / 420 W at 1200 VDC via two push buttons, triggering a RCD/FI up to 30 mA
- IP 64, water and dust-resistant
- Integrated probe-tip protection for reducing the danger of injuries

Product highlights

- No unintentional triggering of RCD/FI circuit breakers
- Fast single-handed testing of power sockets with 19 mm contact clearance, without the probe coming away from the unit
- Lighting of measurement points via white LED
- Extremely robust construction with doubly insulated wires

When looking for other features please be informed that we also offer the **2100-Alpha** and **2100-Beta** voltage and continuity testers.



2100-GAMMA	
Display	LED bar graph display, $\pm 12, 24, 50, 120, 230, 400, \geq 690V$, LCD, 6...1000 V AC/1200 V DC
Voltage range	6...1000 V AC/1200 V DC
Direct/Alternating current	automatic recognition
Frequency range	DC, 16 2/3 Hz...400 Hz
Internal nominal load	approx. 3.5 W at 1000 VAC/5.4 at 1200 VDC
Test current	≤ 3.5 mA at 1000 VAC / ≤ 4.5 mA at 1200 VDC (without key activation)
Switchable load	approx. 300 W at 1000 V AC/Approximately 420 W at 1200 VDC
Test current with load	≤ 300 mA AC at 1000 V AC/ ≤ 350 mA DC at 1200 V DC
Rotating field definition	170...1000 V AC (phase conductor)
Frequency range	40...70 Hz
Single-pole phase test	100 ... 1000 V AC
Voltage range	40...70 Hz
Continuity measurement of switching threshold	approx. 500 k Ω
Test current	<5 μ A
Resistance measurement range/resolution	0...1999 Ω /1 Ω
Test current	<30 μ A
Low resistance indication acoustic indication	<10...50 Ω
Overvoltage protection	1000 V AC / 1200 V DC
Non-contact voltage indicator	(NCV/EF)
Voltage range	100...1000 V AC
Frequency range	50...60 Hz
Display	Three-stage display via LCD segments
Safety cert	DIN VDE 0682-401, EN 61243-3
Measurement	CAT IV / 600 V, CAT III / 1000V
Pollution Degree	2
Protection Category	IP 64, water and dust-resistant
Power supply	2 x battery 1.5 V Micro, IEC LR03
Current consumption	max. 60 mA
Dimensions	approx. 280 x 78 x 35 mm
Weight	approx. 320 g

INCLUDED ACCESSORIES: 1 x 2100-GAMMA, 2 x probe cover (GS38), 2 x 4-mm probe extenders (screwable), 2 x batteries, 1.5 V, IEC LR 03 (AAA), Micro, 1 x user manual



Accessories:



2100-ACCS
4 mm probe extenders and probe tip covers
Model 2100-ACCS

BAT-250-EUR Battery Tester

The Amprobe BAT-250-EUR Battery Tester is designed for one-handed, comfortable and reliable battery measurements. The uniquely designed tester offers an ergonomic slider and a v-shaped side cradle to better hold batteries in place during testing. The contoured case shape fits neatly in your hand. Testing your batteries has never been easier.



BAT-250-EUR

Slider for testing AAA, AA, C, D, and 1.5 V button/coin/watch batteries.

- Quickly indicates if batteries are “good”, “low” or “replace”
- Test standard and rechargeable batteries: 9V, AAA, AA, C, D, and 1.5 V button/coin/watch
- Ergonomically designed to contour to your hand for easy operation
- No batteries required to operate
- Large, upright display is easy to read
- V-shaped side cradle holds batteries securely in place during testing for consistently accurate results
- High-quality 9V contacts make tests simple and error-free
- Slider is shaped for one-handed testing

BAT-250-EUR Battery Tester	
I Max at F.S.D (typical)	1.5 V: 375 mA, 9 V: 40 mA
Normal load (typical)	1.5 V: 4 Ω, 9 V: 215 Ω
Dimensions (H x W x D)	4.3 x 2.9 x 1.1 in (110 x 74 x 29 mm)
Battery size	9 V, AAA, AA, C, D and 1.5 V button/coin/watch battery
Weight	Approximately 0.11 lb (50 g)
Certification	CE

Battery Type:	Battery Indicator (typical):		
	REPLACE	LOW	GOOD
AAA, AA, C, D and 1.5 V button/coin/watch battery	< 0.9 V	0.9 V	> 1.0 V
9 V	< 5.3 V	5.3 V	> 6.5 V

INCLUDED ACCESSORIES: User manual



LAN-1

LAN-1 LAN Cable Tester

The LAN-1 Cable Tester is designed for testing opens, shorts and miswired cable installations. It is designed to work with various data cables and connectors. This cable tester provides a quick go/no-go LED display of the wiring and connection of item under test. You can either step through the test cable wiring one at a time or have the unit automatically pulse through the pin-outs and display the results.

Functions

- Testing wiring faults of LAN cables
- Detection of cable breaks, short circuits, reversed and split pairs
- Check of shielding

- Testing installed cable on wall plate or the patch panels by using an external coding plug
- Testing a cable loop or remote testing with a coding plug
- Acoustic error display

Product information

- Test pin configuration for:
 - 10/100 base
 - 10 base-2 cables
 - RJ45 cables
 - AT&T 258A cables
 - EIA / TIA 568A/568B cables
 - Token ring cables

Product highlights

- Automatic and manual test procedure
- Recognition of split pairs

LAN-1	
Display	2x 9 LED segments for cable occupation green output, red input
Connection	RJ45 and BNC
Max. cable length	>300 m
Power supply	battery 1 x 9 V, IEC 6F22
Dimensions	130 x 56 x 38 mm
Weight	approx. 600 g

INCLUDED ACCESSORIES: remote coding plug, battery 9 V, IEC 6F22, 2 adapters RJ45/BNC, adapter RJ45/RJ45, 2 adapters BNC/BNC, carrying case, user manual



AT-7000-EUR Advanced Wire Tracer

Get accurate results in minutes with new features and technologies that simplify wire tracing and breaker identification. The Receiver's patented Smart Sensor™, with its innovative new antenna design and advanced signal processor, clearly displays the location and orientation of energized wires in walls, floors and ceilings on the large color TFT LCD screen. The powerful Transmitter utilizes two optimal frequencies for both energized and de-energized wire and breaker tracing, delivering consistently accurate results for novice users and experts alike. The new Scan and Locate feature clearly identifies the one correct breaker or fuse, eliminating the confusion from multiple false positive readings, common in older technology tracing tools.

- Traces wires in walls, ceilings, floors and corners
- Locates breakers and fuses
- Pinpoints shorts and opens
- High resolution 3.5" TFT LCD color display
- Three power modes
 - "High" power mode for normal circuits
 - "Low" power mode for precision tracing in difficult areas
 - "Clamp" power mode provides a boosted signal using signal clamp
- Two automatically selected frequency modes for optimal tracing on energized and de-energized circuits
- Signal booster rechargeable battery pack (BR-7000-T) increases transmitter signal strength
- Clamp-on attachment (SC-7000-EUR) for inducing signal into wires without access to bare conductors
- Embedded help screens make set-up easy and error free

Features		AT-7020-EUR	AT-7030-EUR
Standard Features	Traces energized and de-energized wires	•	•
	Locates energized and de-energized breakers and fuses	•	•
	Finds shorts and opens	•	•
	Non-contact voltage detection	•	•
Advanced Features	Smart Sensor™ - wire position and direction indicator	•	•
	"Scan and Locate" breaker finder	•	•
	Two frequency modes for optimal tracing in energized (6 kHz) and de-energized (33 kHz) circuits	•	•
	Three power modes (high, low and clamp) for peak performance	•	•
	High resolution 3.5" TFT LCD color display	•	•
	Hot Stick attachment adapter	•	•
	Signal Booster Li-Ion Rechargeable 7.2V Battery Pack		•
Signal clamp attachment		•	

		ITEM NO	AT-7020-EUR	AT-7030-EUR
AT-7000-RE	Receiver unit with Smart Sensor, Tip Sensor and color TFT LCD display	4542802	•	•
AT-7000-TE	Transmitter with two transmission frequencies (6 kHz and 33 kHz) and three power modes (high, low, clamp)	4542816	•	•
TL-7000-EUR	Test Lead Set with alligator clips (Black & Red), 30 ft. grounding lead, power cord, plug adaptors and light socket adapter	4542857	•	•
CC-7000-EUR	Custom Amprobe hard carrying case that securely holds transmitter, receiver, signal clamp, test leads and accessories	4542833	•	•
SC-7000-EUR	Signal Clamp accessory for inducing a signal into wires without access to bare conductors	4542825	(optional)	•
HS-1	Three-way magnetic hanger for AT-7000-T transmitter, allowing for convenient hanging of unit, placement on belt or as a stand	4594135	(optional)	•
BR-7000-T	Signal Booster Rechargeable Battery Pack (LI-ION, 7.2 V, 2.2 Ah), provides increased signal transmission power in High and Clamp modes	4467296	(optional)	•
BR-7000C	External battery charger for BR-7000-T	4544583	(optional)	(optional)
TL-7000-25M	Test lead 25 meters in length	4634011	(optional)	(optional)

INCLUDED ACCESSORIES: Refer to the "Kit Contains" table above.



AT-7000-RE Receiver



AT-7000-TE Transmitter



SC-7000-EUR Signal Clamp



AT-7020-EUR



AT-7030-EUR

AT-3500 Underground Cable/Pipe Locator System

Keep productivity high and operational costs low, with the AT-3500. This rugged, economical solution helps you locate underground energized and de-energized wires, cables and pipes. Great for parking lot and airport lighting applications, it precisely pinpoints buried services, with exceptionally fast sound and meter response.

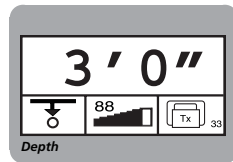
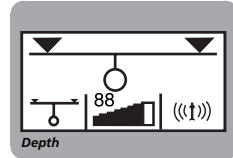
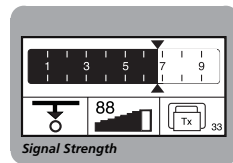
- Precisely pinpoint buried cables and wires
- Three testing modes for best accuracy:
 - Passive power (50 Hz / 60 Hz)
 - Passive radio (RF)
 - Active T-3500 signal generator with induction mode directly connected to the cable with test leads or optional clamp
- Proven 33 kHz frequency for most locating applications
- Avoid lines at utility construction sites with highly sensitive power and radio modes
- Take depth measurements up to 16' (4.9m)
- Backlit multiple-segment digital display with audible alerts to show and tell location of buried cables
- Semi-automatic gain control for fast signal location and control



AT-3500

FEATURE	AT-3500
Depth Measurement	16 ft (4.9 m)
Passive Tracing Frequencies	50 Hz / 60 Hz
Transmitter Frequency	Single, non-adjustable
Receiver Active Frequencies (Hz)	32.768 kHz
Receiver Passive Frequencies (Hz)	Range 1: radio 15 kHz to 23 kHz Range 2: power network 50 Hz / 60 Hz; optionally 100 Hz (can be adjusted by Amprobe service personnel)
Receiver Depth Display Accuracy	Range 1: radio +/- 20% Range 2: power network +/- 20% Range 3: transmitter +/- 5% (>5 m (6 ft), +/- 20% (<5 m (15 ft))
Receiver Depth Range	Maximum 16 ft (4.9 m)

INCLUDED ACCESSORIES: Receiver, transmitter, connection cables, ground stake, carrying case, user manual, batteries (installed)



SC-3500

SC-3500 Signal Clamp for AT-3500



MLS55-3

MLS55-3 Pipe Transmitter for AT-3500

TMA5 Mini Vane Anemometer

This pocket-sized tool gives you an easy way to measure air flow, temperature and humidity in the HVAC systems of residential, commercial or industrial buildings.

- Measures air velocity, temperature and ambient temperature (in °F or °C), humidity, dew point, wet bulb, wind chill
- Simple, two-button operation
- Selectable wind units: mph, ft/m, Knt, m/s, km/h, BF
- Maximum wind speed display
- Data hold
- Auto power-off with disable feature
- Low battery indication
- Ergonomic design with wrist strap
- External temperature probe included

FEATURE	TMA5
Wind Speed Range	0.5 → 44.7 mph, 60 → 3937 ft/m, 0.4 → 38.8 knt, 1.1 → 20.0 m/s, 0.7 → 72.0 km/h, 1 → 8 BF
Air Temperature Range	32°F → 122°F (0°C → 50°C)
External Temperature Range	-4°F → 158°F (-20°C → 70°C)
Air RH% Range	5% → 95% RH
Wind Speed Response	averaging every 2 seconds
Temperature Response Time	60 seconds (typical)
Air RH% Response Time	60 seconds (typical)
Wind-Chill Display	•
Dew Point Temperature	•
Wet Bulb Temperature	•

INCLUDED ACCESSORIES: Battery (installed), user manual, external temperature probe, ergonomic wrist strap



TMA5

TMA10A Anemometer with Flexible Precision Vane

The essential tool for HVAC technicians, the TMA10A measures air velocity or volume (CFM), plus temperature. Just enter surface area type for accurate airflow measurements.

- Large dual display for viewing airflow or velocity measurement including temperature
- Long flexible cord to access remote vanes
- Continuous moving average for up to 2 hours
- Air velocity average for up to 8 points
- Multi-point air flow (cfm) average
- PC interface for charting or analysis
- Min/max/average reading on a single point
- Data hold
- Auto power-off function

FUNCTION	RANGE	BEST ACCURACY
Air Velocity	0.40 → 25.00 m/s	+/- 2% of full scale
	125 → 4900 ft/min	+/- 2% of full scale
Air Flow	0.01 → 99.99 m ³ /sec	0 → 9.999 m
	1 ft → 9999 cfm	0 → 9.999 ft
Air Temperature °F (°C)	32°F → 122°F (0°C to 50°C)	+/- 1.5°F (0.8°C)

INCLUDED ACCESSORIES: Carrying case, battery (installed), user manual, optional PC interface for charting or analysis



TMA10A

TMA40-A Anemometer, Relative Humidity and Temperature

With one tool, you can measure air velocity (FPM) or air volume (CFM), relative humidity, and temperature. Large digital display with backlight and flexible measurement vane makes measuring easier in difficult areas. Measures up to 99 points and logs up to 2400 measurements.

- Flexible measurement vane for accessing difficult areas
- Measures air velocity (fpm), air volume (cfm), relative humidity, and temperature
- Measure up to 99 points
- Data logging up to 2400 data points
- Optional PC interface for charting or analysis
- Large digital display with backlight

FUNCTION	RANGE	RESOLUTION	ACCURACY
Air Velocity	0.4 to 32 m/s (1.3 to 105 ft/s)	0.1 m/s (0.1 ft/s)	+/- 3%
Air Volume	0 → 99999 (cfm/cmm)	0.1 CMM - 1 CFM	+/- 3%
Temperature	-4°F → 158°F (-20°C → 70°C)	0.1°F (0.1°C)	± 0.6°C (± 1°F)
Relative Humidity	0 → 100%	0.1%	+/- 3% @ 77°F (25°C)

INCLUDED ACCESSORIES: Carrying case, battery (installed), user manual, optional PC interface for charting or analysis



TMA40-A



TMA-21HW

TMA-21HW Hot Wire Anemometer

Hot wire anemometer technology eliminates bearings and rotating parts to make these meters durable and measurements stable and accurate. It's the simple, safe way to monitor indoor air quality and measure air flow and temperature in residential, commercial and industrial air conditioning systems.

- 4' (1.2m) telescopic wand - no ladder needed for most commercial applications
- Measures air flow volume in CFM, CMM
- Instant average, 2/3 Vmax flow measurements
- Velocity m/s, ft/min, knots, km/hr, mph
- Relative humidity and temperature measurement
- Data hold, min/max with time stamp
- Data memory and real-time function (99 sets)
- 512KB auto data-logging capacity
- USB interface
- Wet bulb and dew point
- Large backlight LCD display shows five parameters

FEATURE	TMA-21HW	BEST ACCURACY
Air Flow	0.10 m/s → 30.00 m/s 0.2 km/hr → 110.0 km/hr 10 ft/min → 6000 ft/min 0.10 knots → 59.0 knots 0.12 MPH → 68.00 MPH	+/- 3% of rdg +/-1% FS
Air Flow Volume	0.000 CFM → 999900 CFM 0.000 CMM → 999900 CMM	+/- 3%
Temperature	-4°F → 140°F (-20°C → 60°C)	+/- 0.9°F (+/- 0.5°C)
Relative Humidity	0.0 → 100%	+/- 3%
Data-logging via USB	•	-
Wet Bulb / Dew Point	•	-

INCLUDED ACCESSORIES: Batteries (installed), hard carrying case, user manual, USB cable and PC software



CM-100

CM-100 Carbon Monoxide Meter

This compact meter measures the presence of carbon monoxide and warns you when it exceeds safe levels.

- Alarm is preset to 25 ppm to warn about possible danger
- Adjustable CO warning levels: 25, 30, 35, 45, 50, 70, 100 and 200 ppm
- Backlight for viewing in dim areas
- Auto power-off to save batteries
- Self-test feature
- Dual digital backlit display

FEATURE	CM-100
Range	0 ppm → 999 ppm
Resolution	1 ppm

INCLUDED ACCESSORIES: User manual, batteries (installed)



TX900

TX900 Microwave Leakage-Detector kit

The Amprobe TX900 Microwave Leakage Detector has been designed to assist domestic and commercial appliance engineers with microwave ovens. The Amprobe TX900 can be used to verify if the oven operates in accordance with current standards and regulations.

- Measures for wave leakage and tests oven power
- 8 dipole sensors – allows detection of plane wave signals of any polarization
- Temperature compensation – accurate reading regardless of ambient temperature changes
- Compact, ergonomic design
- Low battery indication
- Analog Bar Graph
- Auto-zero

FEATURES	TX900
RF Power sensing range	0 mW/cm ² → 10 mW/cm ²
Nominal detecting frequency	2.45 GHz
RF Power sensing range	0 to 10 mW/cm ²
Nominal detecting frequency	2.45 GHz
Calibration accuracy	± 1dB in plane wave - circular polarization
Response to step input	< 1 sec.

INCLUDED ACCESSORIES: 2 x 500 ml plastic beakers, spirit (Alcohol), glass thermometer, battery(installed) carrying case, user manual

Ultrasonic Leak Detection

When leaks occur in pressurized systems, they emit an ultrasonic frequency humans can't hear. The ULD-300 and the TMULD-300 ultrasonic leak detectors convert the sounds into an audible range for fast, easy leak detection.

TMULD-300 Ultrasonic Leak Detector with Ultrasonic Transmitter

When leaking gases are not sufficiently pressurized, use the TMULD-300. It includes an ultrasonic transmitter that creates sound waves so you can check door or trunk seals for air tightness, or windshields for water tightness.

- Same features as ULD-300
- Transmitter "pressurizes" an area with ultrasonic sound

INCLUDED ACCESSORIES: Flexible tubing adapter, tubular extension, carrying case, power parabola, headphone, batteries (installed), UT-300 transmitter



TMULD-300

LM-100 and LM-120 Light Meters

These portable, easy-to-use digital light meters measure interior illumination levels from fluorescent, metal halide, high-pressure sodium or incandescent sources. Switch off, reduce or increase the output level of lighting fixtures. Reduce the energy burden of the building by significantly increasing the efficiency of its lighting system.

- Measure in lux or footcandles, front panel switchable
- Simple, one-handed operation
- Silicon photodiode sensor and filter for accuracy and high-resolution
- Analog DC voltage output to operate with chart recorder or data logger (LM-120 only)
- Zero adjustment (LM-120 only)
- Auto power-off to save battery life

FEATURES	LM-100	LM-120
Ranging	Manual	Automatic / Manual
Illumination Sensor	Silicon photodiode and filter	
Range Lux	20, 200, 2000, 20000, 200000	
Range Footcandles	20, 200, 2000, 20000	
Calibration Point	2854 °K Cosine Angular corrected per JIS C 1609:1993 and CNS 5119 general A class	
Data	Data hold	Data hold, min/max

INCLUDED ACCESSORIES: Batteries (installed), carrying case, user manual



LM-100

SOLAR-100 Power Meter

Optimize the placement of solar systems and analyze window efficiency with the SOLAR-100. Measure solar output and calculate overall energy and efficiency.

- Windows performance testing: calculate and verify heating or heat reduction caused by direct sunlight
- Research the location of solar panels or solar water heaters
- Measures solar power and transmission
- Power mode measures incident solar radiation
- Transmission mode calculates the percentage of solar power transmission through materials such as windows
- Convenient display with remote sensor technology
- Selectable measurement units (W/m² or BTU/ft²xh)
- Min/max function identifies locations with maximum or minimum power
- Also useful for physics and optical laboratories, meteorology, agriculture

FEATURE	SOLAR-100
Solar Power	Up to 2000 W/m ² , 634 BTU/(ft ² xh)
Max/Min	•
Data Hold	•

INCLUDED ACCESSORIES: Battery (installed), carrying case, user manual



Solar-100



SM-20-A

SM-10 and SM-20-A Sound Meters

These sound meters meet the measurement needs of safety engineers, health, industrial and safety offices as well as quality control. Use them to check compliance with safety regulations and perform acoustic analysis. They use two different weighting filters required by the IEC 651 and ANSI S1.4 Type 2 for audio filtering.

- A-weighting for general noise sound level
- C-weighting for measuring sound level of acoustic material control in various environments
- Display with 0.1dB steps on a 4-digit LCD
- Slow (1 sec) and fast (125ms) response settings to check peak and average noise levels
- PC interfaces (SM-20-A only)

FEATURES	SM-10	SM-20-A
Microphone	1/2" Electret condenser microphone	
Standard Applied	IEC 651 Type 2, ANSI S1.4 Type 2	
Dynamic Range	50 dB	
Time Weighting	FAST (125 mS), SLOW (1 sec)	
Frequency Range	31.5 Hz → 8 kHz	
Measuring Level Range (Auto Range)	A-Weighting: 30 dB → 130 dB C-Weighting: 35 dB → 130 dB	
Data	Data hold	Min/max
Internal Memory	–	14000 records

INCLUDED ACCESSORIES: Carrying case, user manual, battery (installed), USB cable download and software CD (SM-20-A only)



SM-CAL1

SM-CAL1 Sound Meter Calibrator

This instrument generates the fixed sound level signals needed to calibrate sound level meters.

- Two output levels: 94 dB and 114 dB
- Output frequency: 1000Hz
- Fits 0.5" microphones
- Easy one-handed operation
- Low battery indicator
- CE: conforms to ANSI S1.40 – 1984 and IEC942 – 1988 Class 2

INCLUDED ACCESSORIES: Battery (installed), user manual



TACH-10 and TACH20 Combo Tachometers

Measure rotational speed of motors, conveyor belts and other moving or rotating systems with these handheld tachometers. The TACH20, our top-of-the-line tachometer includes six adapters, a surface speed wheel for contact RPM measurement and an infrared beam for non-contact measurements. The TACH-10 is an economical, universal tachometer that measures rotational and surface speed using both contact and non-contact methods.

- Built-in memory function automatically stores maximum, minimum and average values as well as the last measurement displayed
- Easy to select units and mode functions
- Select RPM using infrared beam or adapter: m/min, m/sec, ft/min, ft/sec, in/min, m, ft and in
- Auto power-off function

FEATURE	TACH-10	TACH20
Rotation (Non-Contact)	10.0 rpm → 99999 rpm	1 min → 99999 min
Rotation (Contact)	10.0 rpm → 19999 rpm	1 min → 19999 min
Surface Speed (Contact)	1.0000 → 9999.9 m/min 3.0000 → 30000 ft/min 1.0 → 10000 yd/min	0.10 → 1999 m/min 0.40 → 6550 ft/min 4.00 → 78700 in/min 0.10 → 33.30 m/sec 0.10 → 109 ft/sec

INCLUDED ACCESSORIES: Batteries (installed), user manual, reflective tape, carrying case, adapters



TACH-10



TACH20

TR300 Temperature and Relative Humidity Data Logger

Wall-mountable, self-standing, or tri-pod mountable, this data logger configures to your application.

- Temperature, relative humidity, dew point or web bulb measurements with real-time date/hour stamp
- Audible and visual alerts help you monitor IAQ conditions
- Stores up to 16,000 readings
- Records data to a PC with USB cable and Amprobe software included
- Programming on-screen or from the PC

FEATURES	TR300
Dual Display LCD	•
Air Temperature Reading	-4°F → 158°F (-20°C → 70°C)
Temperature Accuracy	+/- 1°F (+/- 0.6°C)
RH Reading	0 to 100%
RH Accuracy	+/- 3% from 10 - 90%
Recording	16000
Dew Point Reading	•
On Screen Programmable	•
Software Programmable	•

INCLUDED ACCESSORIES: Batteries (installed), user manual, PC software CD and USB cable



TR300



TR200-A Temperature and Relative Humidity Data Logger

One compact unit monitors both temperature and humidity and records it on your PC using the USB interface. Amprobe software included.

- Record sample interval timing, start/stop, date, time, Hi/Lo alarm threshold, and units
- Visible LED warnings alert you to air quality problems
- IP-65 rating for dust and moisture
- Wall mountable

INCLUDED ACCESSORIES: Batteries (installed), user manual, PC software CD and USB cable



TR200-A

IR-450-EUR Infrared Pocket Thermometer, Laser Pointer and Flashlight

A must have tool for everyday applications, the IR-450-EUR 3-in-1 Infrared Pocket Thermometer, Laser Pointer, and Flashlight offers a uniquely small and convenient form factor with professional 8:1 distance to spot ratio. More portable than traditional infrared thermometers, quickly check temperatures in HVAC/R, fire safety and protection, industrial maintenance, automotive and quality control applications.



IR-450-EUR

- 8:1 Distance To Spot (D:S) ratio
- Bright laser pointer
- Built-in LED flashlight to illuminate dark areas
- Holds temperature reading (selectable °F/°C) for ten seconds

SPECIFICATIONS	IR-450-EUR
Range	-22°F → 932°F (-30°C → 500°C)
Distance to Spot Size	8:1 ratio
Best Resolution	0.5°F (0.2°C)
Best Accuracy	+/- 4°F (2°C)
Emissivity	Pre-set 0.95

INCLUDED ACCESSORIES: Battery (installed), user manual, pocket clip



TH-1

TH-1, TH-3 Compact Probe Style Relative Humidity Meters

Slip this little meter in your pocket and be ready for quick temperature and humidity checks.

- Displays relative humidity and temperature simultaneously
- Measure wet bulb and dew point
- Precision capacity relative humidity sensor with twistable protective cap
- Results in metric or English
- Stores min/max readings for comparisons
- Data hold

FEATURE	TH-3	TH-1
Temperature – Internal Sensor	-4°F → 140°F (-20°C → 60°C)	-44°F → 122°F (-20°C → 50°C)
Relative Humidity	5 → 95%	10 → 95%
Dew Point Temp	–	•
Wet Bulb Temp	–	•

INCLUDED ACCESSORIES: Carrying case, user manual, battery



THWD-3 and TH-3 Relative Humidity and Temperature Meters

An exceptionally wide ambient temperature range makes these meters versatile and accurate.

- Large LCD displays two measurements simultaneously
- Extended probe stem for easy access to air ducts
- Dew point and wet bulb (THWD-3 only)
- Min/max readings
- Temperature measurement range: -4°F (-20°C) to 140°F (60°C)
- Data hold
- Capacitive sensor with protective cover
- Auto power-off

INCLUDED ACCESSORIES: Carrying case, battery (installed), user manual



THWD-3

TPP1-C1, TPP2-C1 Flat Surface Thermometer Probe

Small and portable for those measurements out in the field. Digital displays with 0.1 resolution. Fahrenheit and Celsius versions available. Immersion probe thermometer also available.

- Flat surface contact area
- Temperature to
 - -50 °C to 250 °C (TPP2-C1)
 - -58 °F to 480 °F (TPP2-F1)
- 0.1 ° resolution in both Celsius and Fahrenheit
- Easy to read digital display
- Data hold
- Long battery life 200 hours, typical
- Battery included



TPP1-C1

MT-10 Moisture Meter

Measure the moisture content of wallboard, wood, mortar, plaster or other building materials to identify areas of water damage or harmful mold growth. Check wood or concrete flooring before installation, wood during drying or before woodworking.

- Three-color LED indicates moisture severity
- Backlight makes display visible in dim areas

INCLUDED ACCESSORIES: User manual, battery



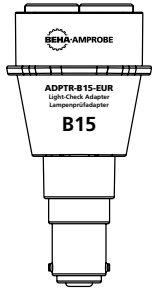
MT-10

Light-Check Adapters

- Optimal and safe contact to light points
- Additional safety barrier (finger guard)
- Designed in a small housing
- Ease of use, one-hand operation
- Maintenance free

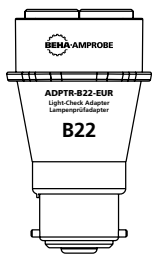
ideal in combination with e.g.:

- installation testers
- insulation testers
- wire testers
- voltage monitoring and measurement



ADPTR-B15-EUR

Light Check Adapter.



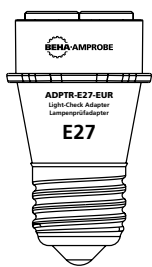
ADPTR-B22-EUR

Light Check Adapter.



ADPTR-E14-EUR

Light Check Adapter.



ADPTR-E27-EUR

Light Check Adapter.



ADPTR-GU10-EUR

Light Check adapter.

ADPTR-KIT1-EUR

Light Check Adapter Kit EUR
consisting of complete set of 5
adapters (E27, B22, E14, B15, GU10)
with carrying case.

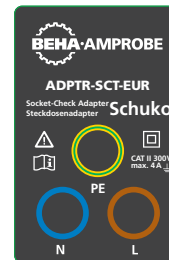
Socket-Check Adapters

- Allow fast connection and measurement
- Highest safety
- Designed in a small housing
- Ease of use, one-hand operation
- Maintenance free



ADPTR-PE_EUR

Socket Check Adapter
Schuko.



ADPTR-SCT-EUR

Socket Check Adapter
Schuko.



ADPTR-SCT-UK

Socket Check Adapter.

Adapters



1235D

CEE 5-Pole 16 A Adapter for leakage current.

- Measurement adapter for measuring differential current, protective earth current, load current, and neutral conductor current in portable consumers via a leakage current clamp
- All conductors are individually brought out



DAA-16

16A 3-Phase CEE Plug with Banana Jacks.

- Three-phase current plug CEE 16 A
- Connections via five separate 4 mm sockets for L1, L2, L3, N and PE
- For quick connection of test devices to threephase sockets when testing according to DIN VDE 0100



1240D

For testing portal devices with three-phase current plug 16 A CEE 5-pole

- Measurement of protective earth resistance and insulation resistance
- Suitable for all test equipment with an earthed socket



1236D

CEE 5-Pole 32 A Adapter for leakage current.

- Measurement adapter for measuring differential current, protective earth current, load current, and neutral conductor current in portable consumers via a leakage current clamp
- All conductors are individually brought out



DAA-32

3-Phase CEE Plug with Banana Jacks.

- Three-phase current plug CEE 32 A
- Connections via five separate 4 mm sockets for L1, L2, L3, N and PE
- For quick connection of test devices to threephase sockets when testing according to DIN VDE 0100



1241D

For testing portal devices with three-phase current plug 16 A CEE 5-pole

- Measurement of protective earth resistance and insulation resistance
- Suitable for all test equipment with an earthed socket



1343D

For testing portable equipment and extension cables with the plugs and couplings:

- 16 A CEE 3-pole
- 16 A CEE 5-pole
- 32 A CEE 5-pole
- IEC power cable and Schuko
- Measurement of protective earth resistance, insulation resistance, function of active conductors (L-N), and rotary field
- Suitable for all test equipment with an earthed socket and test probe



1142D

For testing portable equipment with the plugs:

- 16 A CEE 3-pole, 16 A CEE 5-pole, and 32 A CEE 5-pole
- Measurement of protective earth resistance and insulation resistance
- Suitable for all test equipment with an earthed socket and test probe



1233D

Measurement adapter for measuring differential current, protective earth current, load current, and neutral conductor current in portable consumers via a leakage current clamp

- All conductors are individually brought out

9080D SCHUKO-TEST FI/RCD

Functions

- Fast and effective testing of 30 mA RCD/FI
- Testing for correct/incorrect wiring
- Connection test for individual conductors (L-NPE)
- PE fault detection

Product information

- True PE fault detection via LCD and contact electrode
- Detection of wiring faults with classic protective earthing

Product highlights

- Clear and reliable indication of PE faults via LCD screen



Schuko-Test
FI/RCD

FEATURES	SPECIFICATIONS
Nominal voltage	230 V AC $\pm 10\%$
Frequency range	50...60 Hz
RCD/FI test current	30 mA
RCD/FI test time	< 300 ms
Contact voltage with break-off at monitoring PE fault detection	20...25 V AC/DC
Response threshold	25 V AC
Safety certification	DIN VDE 0411/EN 61010/IEC 61010
Measurement category	CAT II/300 V
Pollution degree	2
Power supply	from mains voltage



Socket test

FI/RCD testers contain a display for testing the pin assignment specifically intended for testing an earthed socket. With all RCD/FI testers, the contact voltage is monitored and any PE faults are clearly displayed.

AMP-200-EUR and AMP-300-EUR Series TRMS and Motor Maintenance Clamp Meters

The AMP-200-EUR and -300-EUR Series True-RMS Clamp Meters offer a complete range of measurement functions for modern electrical environments, motor testing and HVAC applications. All models feature True-RMS sensing, low pass filters and fast response processors for quick, error-free measurements. The new Amp-Tip function allows for precise measurement of current down to the tenth of an Amp, and a third input jack on the AMP-300-EUR Series enables motor rotation and 3-phase sequence testing. These clamps are surprisingly versatile, designed to eliminate the need for multiple tools and provide all-in-one measurement capabilities.

- **True-RMS** for noisy environments
- **Motor testing capabilities** (AMP-300-EUR Series)
- **HVAC features** (AMP-300-EUR Series)
- **Capacitance measurement**
- **Amp-Tip function** for precise measurements on small wires
- **Low pass filter** for variable frequency drives
- **Peak hold** (AMP-330-EUR)
- **Work light** (AMP-330-EUR)
- **Safety rated:**
 - **CAT III 600 V** (AMP-200-EUR Series, AMP-310-EUR, AMP-320-EUR)
 - **CAT III 1000 V, CAT IV 600 V** (AMP-330-EUR)



AMP-330-EUR
Industrial Motor Maintenance Clamp Meter

FEATURE	AMP-210-EUR	AMP-220-EUR	AMP-310-EUR	AMP-320-EUR	AMP-330-EUR	BEST ACCURACY					
Electrical	AC Current					0 to 600.0 A	0 to 1000 A ±1.8% + 5LSD (50 to 100 Hz) AMP-330-EUR: ±1.8% + 5LSD (40 to 100 Hz)				
	DC Current					–	0 to 600.0 A	–	0 to 600.0 A	0 to 1000 A	±2.0% + 5LSD AMP-330-EUR: ±1.8% + 5LSD
	AC Voltage					0 to 600.0 V		0 to 1000.0 V	±1.0% + 5LSD (50 to 60 Hz) AMP-330-EUR: ±0.8% + 5LSD (50 to 60 Hz)		
	DC Voltage					0 to 600.0 V		0 to 1000.0 V	±1.0% + 5LSD AMP-330-EUR: ±0.8% + 5LSD		
	Resistance					0.0 kΩ to 60.00 kΩ		±1.0% + 5LSD			
	Frequency					5.00 Hz to 999.9 Hz		±1.0% + 5LSD (600 V range) ±1.0% + 5LSD (600 A range) AMP-330-EUR: ±1.0% + 5LSD (1000 V range) ±1.0% + 5LSD (1000 A range)			
	Amp-Tip Function (precise low current)					•	•	•	•	•	
Accommodates Conductors					1.18" (30mm)	1.37" (35mm)	1.18" (30mm)	1.37" (35mm)	2.0" (51mm)		
HVAC	Capacitance					0.0 μF to 2500 μF		±2.0% + 4LSD			
	DCμA					–	–	0.0 to 2000 μA	±1.0% + 5LSD		
	Temperature					–	–	-40.0 to 752°F, -40.0 to 400°C	-40.0 to 14.0°F (±1.0% +3.0°F), >14.0 to 99.9°F (±1.0% +1.5°F) 100 to 752°F (±1.0% +2°F), -40.0 to -10.0°C (±1.0% +1.5°C), >-10.0 to 99.9°C (±1.0% +0.8°C), 100 to 400°C (±1.0% +1°C)		
Motor	3-Phase and Motor Rotation Indication					–	–	•	•	•	
	Inrush Current					–	•	•	•	•	
	Peak Hold (Crest)					–	–	–	–	•	
	Low Pass Filter					•	•	•	•	•	

INCLUDED ACCESSORIES: Test leads, user manual, batteries (installed)
AMP-310-EUR, AMP-320-EUR, AMP-330-EUR only: Alligator Clip Set, Banana plug K-type Thermocouple



ACD-14-PRO-EUR Dual Display 600 A TRMS Clamp Multimeter

The ACD-14-PRO-EUR offers a complete range of measuring functions for both HVAC and electrical applications featuring a large backlit LCD dual display, capable of simultaneously displaying voltage and amps. The ACD-14-PRO-EUR includes TRMS, low pass filter, in-rush current, frequency, resistance, capacitance, temperature, DC micro amps, Amp-Tip and non-contact voltage detection. The Amp-Tip function allows for precise measurement of current down to the tenth of an amp for reliable, accurate current measurement of both large and small diameter wires. The low pass filter allows measurement of current and voltage on variable frequency drives (motors with speed controlled by frequency).



ACD-14-PRO-EUR
Dual Display
600 A TRMS Clamp Multimeter

- Large LCD with dual display that can display voltage and amps concurrently
- True-RMS for accurate voltage measurements in noisy environments
- Low pass filter for current and voltage measurements on variable frequency drives
- Amp-Tip function for precise low current measurement down to 0.1 amp
- HVAC applications with temperature, DC micro-amps and capacitance
- In-rush current
- Temperature
- Non-contact voltage detection (NCV)
- Audible continuity and diode test
- Data hold
- Auto ranging
- Auto power off
- Low battery indicator
- Safety rated CAT III 600 V

FEATURE	ACD-14-PRO-EUR
AC Voltage (Digital Low-Pass Filter, True-RMS)	Range: 0.0 to 600.0 V, Accuracy: $\pm 1.0\% + 5\text{LSD}$ (50 to 60 Hz)
DC Voltage	Range: 0.0 to 600.0 V, Accuracy: $\pm 1.0\% + 5\text{LSD}$
AC Current (True-RMS)	Range: 0.00 to 600.0 A, Accuracy: $\pm 1.8\% + 5\text{LSD}$ (50 to <100 Hz) $\pm 2.0\% + 5\text{LSD}$ (100 to 400 Hz)
Precise Low Current AC (Amp-Tip)	Range: 0.00 to 60.00 A, Accuracy: $\pm 1.5\% + 5\text{LSD}$ (50 to 60 Hz)
DC Micro amps	Range: 0.0 to 2000 μA , Accuracy: $\pm 1.0\% + 5\text{LSD}$
Capacitance	Range: 200.0 μF , 2500 μF , Accuracy: $\pm (2.0\% + 4 \text{ LSD})$
Diode Test	Range: 0.0 to 3.000 V, Accuracy: $\pm (1.5\% + 5 \text{ LSD})$
Temperature* (Type K thermocouple) *K-type thermocouple accuracy tolerances not included	Range: -40.0 to 752 °F, -40.0 to 400 °C, Accuracy: $\pm 1.0\% + 1.5\text{ }^\circ\text{F}$ (-40.0 to 99.9 °F) $\pm 1.0\% + 2\text{ }^\circ\text{F}$ (100 to 752 °F) $\pm 1.0\% + 0.8\text{ }^\circ\text{C}$ (-40.0 to 99.9 °C) $\pm 1.0\% + 1\text{ }^\circ\text{C}$ (100 to 400 °C)
Non-Contact Voltage	•
Backlight	•
Auto Power Off	•

INCLUDED ACCESSORIES: User manual, Test leads, Carrying case, Batteries AAA (2), Banana plug K-type thermocouple



ACD-20 Series Swivel™ Clamp Meters

Get fast and easy testing for HVAC and electrical applications. See measurements in tight or inconvenient spaces with the patented 180-degree rotating head design of Amprobe's Swivel™ Clamp Meters. The slim jaw puts all features within reach for one-handed operation.

- 180-degree rotating head
- VolTect™ non-contact voltage detection
- Audible continuity
- Auto ranging for quick checks
- Manual ranging for precise measurements
- Data hold

FEATURE	ACD-20SW	ACD-23SW	BEST ACCURACY
True-RMS	-	•	-
AC Current	40.00 A, 400.0 A		+/- (2.0% rdg + 10 LSD) 50 Hz → 60 Hz
AC Voltage	4.000 V, 40.00 V, 400.0 V, 600.0 V		+/- (1.2% rdg + 8 LSD) → 50 Hz → 500 Hz at 4 V → 400 V ranges
DC Voltage	400.0 mV, 4.000 V, 40.00 V, 400.0 V, 600.0 V		+/- (0.5% rdg + 2 LSD)
Resistance	400.0 Ω, 4.000 kΩ, 40.00 kΩ, 400.0 kΩ, 4.000 MΩ, 40.00 MΩ		+/- (1.0% rdg + 4 LSD) at 400 Ω → 400 kΩ ranges
Capacitance	-	4.000 μF, 40.00 μF, 400.0 μF, 4.000 mF	+/- (3.0% rdg + 5 LSD) on 40 μF → 400 μF ranges
Temperature	-	-30°F → 400°F, (-35°C → 400°C)	+/- (1.0% + 2°F) 32°F → 400°F +/- (1.0% + 1°C) 0°C → 400°C
Diode Test	•	-	-
VolTect™ non-contact voltage detection	70 V → 600 VAC (50 Hz → 60 Hz)		-
Backlight	-	•	-
Accommodates Conductors	Up to 1.18" (30 mm) in diameter		

INCLUDED ACCESSORIES: Test leads, battery (installed), user manual, carrying case, K-type thermocouple (ACD-23SW only)



ACD-23SW



LH41A AC/DC Low Current Clamp Meter

The LH41A current clamp meter has been designed for reliable and accurate non-intrusive measurement of DC and AC currents using advanced Hall Effect technology.

- Non - intrusive AC and DC current measurement
- 1mA resolution
- Average responding, RMS calibrated
- Autoranging/ Autozeroing
- Data Hold
- Low battery indicator
- Auto Power Off

FEATURE	LH41A
AC Voltage	-
AC Current	4.000 A, 40.00 A
DC Current	4.000 A, 40.00 A
Resistance	-
Continuity	-
Accommodates Conductors	up to 0.78" (20 mm) in diameter

INCLUDED ACCESSORIES: Batteries (installed), user manual, test leads (AC50A only), carrying case (AC50A only)



LH41A

AMP-25-EUR AC/DC TRMS Mini-Clamp

Small size doesn't mean small features. The Amprobe AMP-25-EUR Mini-Clamp is pocket-sized, enabling quick and easy spot checks of electrical systems. With its rugged construction and CAT III 600V rating, the AMP-25-EUR is a must-have professional troubleshooting tool for commercial electricians and electrical contractors. The AMP-25-EUR is designed to measure AC/DC load current and inrush current for motors. Essential features like True-RMS, non-contact voltage and low pass filter make this clamp stand tall next to clamps twice its size. With the AMP-25-EUR, you never have to sacrifice performance for size.

Pocket-sized
14,7 cm" height.



AMP-25-EUR
AC/DC TRMS
Mini-Clamp

- True-RMS for noisy environments provides accuracy and dependability
- AC & DC current to 300 A (10mA resolution)
- Low pass filter for variable frequency drives
- Inrush current for motor start-up monitoring
- Non-contact voltage detection (NCV)
- Jaw opening to 1 in (25 mm)
- Autoranging
- DCA zero and data hold
- Auto power off
- Large LCD backlit display
- Safety Rated CAT III 600 V

FEATURE	AMP-25-EUR	BEST ACCURACY
AC Current	60.00 / 300.0 A	+/- (1.5% + 5 LSD) @ 50 to 100 Hz ≥ 3 A +/- (2.5% + 5 LSD) @ 100 to 400 Hz ≥ 3 A
DC Current	60.00 / 300.0 A	+/- (1.5% + 5 LSD) @ 300 A range
Low Pass Filter	•	
True-RMS	•	
Inrush Current	•	
Non-Contact Voltage	•	
Data Hold	•	

INCLUDED ACCESSORIES: Carrying case, two 1.5 V LR44 batteries installed and user manual



AM-500-EUR Compact Digital Multimeter

Functions

- Voltage, current and resistance measurement
- Diode and acoustic continuity test

Device information

- Automatic and manual range selection
- Integrated measurement memory (data hold)
- Shock-proof and impact-resistant thanks to standard protective holster
- µA measurement range
- Auto Power Off

Product highlights

- 1.5 V and 9 V battery test



AM-500-EUR

FEATURE	AM-500-EUR	BEST ACCURACY
AC Voltage	2.000 V, 20.00 V, 200.0 V, 600 V	±(1.0% Rdg + 3 LSD) @ 45 Hz → 400 Hz, 2 V to 200 V ranges
DC Voltage	200 mV, 2.000 V, 20.00 V, 200.0 V, 600 V	±(0.8% Rdg + 1 LSD) @ 2 V → 200 V ranges
Resistance	200.0 Ω, 2.000 kΩ, 20.00 kΩ, 200.0 kΩ 2.000 MΩ, 20.00 MΩ	±(1.0% Rdg + 2 LSD) @ 2 kΩ → 200 kΩ ranges
AC Current	200.0 µA, 2000 µA, 20.00 mA, 200.0 mA 2.000 A, 10.00 A	±(1.2% Rdg + 2 LSD) @ 200 µA to 200 mA ranges, 45 Hz → 400 Hz
DC Current	200.0 µA, 2000 µA, 20.00 mA, 200.0 mA 2.000 A, 10.00 A	±(1.0% Rdg + 2 LSD) @ 200 µA → 20 mA ranges
Battery Test	1.5 V, 9 V	±(10% Rdg + 3 LSD)

INCLUDED ACCESSORIES: Test leads (pair), batteries (installed), carrying case, user manual



PM Series Pocket Multimeters

Great things do come in small packages. Get innovative features, a full set of measurement functions and high safety ratings in an ultra-compact size. Only 3/8" (9.5 mm) thick, each meter weighs less than 3 oz (85 g).

- Easy, one-touch button control
- Oversize, easy-to-read digital display
- VoltTect™ non-contact voltage detection (PM55A only)
- Automatically selects AC volts, DC volts or resistance, for convenience (PM55A only)
- Low Z input impedance detect ghost voltages
- Hi Z input impedance for electronic circuitry (PM55A only)
- Continuity beeper
- Diode test
- Data hold
- 30 ms high speed max hold
- Autoranging
- Auto power off

FEATURE	PM51A	PM55A
AC/DC Voltage	400.0 mV, 4.000 V, 40.00 V, 400.0 V, 600 V	6.000 V, 60.00 V, 600.0 V
AC/DC Current	–	400.0 µA, 2000 µA
Frequency	400 Hz, 4 kHz, 40 kHz, 400 kHz, and 1 MHz	10.00 Hz → 30.00 kHz
Resistance	400.0 Ω, 4.000 kΩ, 40.00 kΩ, 400.0 kΩ, 4.000 MΩ, 40.00 MΩ	600.0 Ω, 6.000 kΩ, 60.00 kΩ, 600.0 kΩ, 6.000 MΩ
Capacitance	500.0 nF, 5.000 µF, 50.00 µF, 500.0 µF, 3000 µF	100.0 nF, 1000 nF, 10.00 µF, 100.0 µF
VoltTect™ Non-Contact Voltage Detection	–	•

INCLUDED ACCESSORIES: Carrying case, battery (installed), user manual



PM51A



PM55A



AM-555-EUR

AM-510-EUR

Functions

- Voltage, current and resistance measurement
- Capacitance and frequency measurement
- Diode and acoustic continuity test
- Battery test 1.5 V and 9 V (AM-510-EUR only)

Product information

- Automatic and manual range selection
- Integrated measurement memory (data hold)
- Illuminated display
- Relative measurement
- Auto Power Off

Product highlights

- True RMS measurement (TRMS)
- (only AM-530-EUR and AM-550-EUR)
- Non-contact voltage detection
- Built-in LED flashlight

AM-520-EUR

As AM-510-EUR, but with:

- Temperature measurement

Product information

- Additional bar graph display (61 segments)
- MIN/MAX hold
- Carry case included

AM-535-EUR

- True RMS measurement (TRMS)
- Measures AC and DC currents up to 20 Amps

AM-540-EUR

As AM-520-EUR, but with:

- Low pass filter
- Peak value measurement

Product highlights

- Two temperature inputs
- Duty cycle function
- Measurement category CAT IV / 600V, CAT III / 1000V

AM-555-EUR

- True RMS measurement (TRMS)
- Measures AC and DC currents up to 20 Amps



INCLUDED ACCESSORIES:

All Models:

- Test leads (pair)
- battery 9 V, IEC 6LR61 (installed)
- user manual

AM-520-EUR, AM-535-EUR only:

- temperature probes

AM-535-EUR, AM-540-EUR,

AM-555-EUR only:

- temperature adapter

AM-520-EUR, AM-535-EUR,

AM-540-EUR, AM-555-EUR only:

- hanging strap
- carrying case



Safety set
Model 370003

	AM-510-EUR	AM-520-EUR	AM-535-EUR	AM-540-EUR	AM-555-EUR
Display	3-3/4 digit, 3999 digits	3-3/4 digit, 3999 digits	3-3/4 digit, 3999 digits	3-3/4 digit, 5999 digits	3-3/4 digit, 5999 digits
True-RMS measurement	-	-	•	-	•
Bar graph	-	•	•	•	•
Temperature	-	•	•	•	•
Temperature inputs	0	1	1	2	2
Min/max value memory	-	-	•	•	•
Peak Hold	-	-	-	•	•
Battery test	•	-	-	-	-
Low pass filter	-	-	-	•	•
Duty cycle function	-	-	-	•	a
Measurement Category	CAT III / 600 V	CAT III / 600 V CAT II / 1000 V	CAT III / 600 V CAT II / 1000 V	CAT IV / 600 V CAT III / 1000 V	CAT IV / 600 V CAT III / 1000 V

FEATURE	SPECIFICATIONS*	BASIC ACCURACY	FREQUENCY RANGE
Display Ranges	LCD, 33/4 digit, 5999 digits		
AC voltage	1 mV...1000 V	±(1.0% rdg. + 3 digits)	45 Hz...1 kHz
DC voltage	0.1 mV...1000 V	±(0.5% rdg. + 3 digits)	
Input resistance	10 MΩ		
AC Current	0.1 μA...10 A	±(1.2% rdg. + 5 digits)	45 Hz...1 kHz
DC current	0.1 μA...10 A	±(1.0% rdg. + 2 digits)	
Resistance	0.1 Ω...60 MΩ	±(1.0 % rdg. + 2 digits)	
Continuity	R < 10 Ω	±(0.1% rdg. + 3 digits)	1.00 Hz...60 MHz
Capacitance	0.01 nF...60 mF	±(3.0% rdg. + 5 digits)	
Temperature	-40°C...1000°C	±(1.0% rdg. + 8 °C)	
Pollution degree	2		
Safety cert.	DIN VDE 0411, EN 61010, IEC 61010		
Power supply	1 x battery 9 V, IEC 6LR61		
Dimensions	182 x 90 x 45 mm		

*Technical data relates to the highest model in the series.
Data regarding individual modules can be found on our website beha-amprobe.com.



AM-510-EUR

Download Suite Software

Download Suite is a free software package compatible with most of the Amprobe instruments with download capabilities. Enjoy the benefits of this powerful software package for a wide selection of Amprobe megohmmeters, ground resistance testers, multimeters, and power quality recorders.

- Install software once and use it with all supported Amprobe products
- All instruments share the same file format. You can open files recorded by you, other people, or the Amprobe instruments right on your PC.
- Download Suite automatically checks your version for upgrades and keeps your version current.
- Windows7 compatible



TM-SWA

TM-SWA, USB Cable and Software

- Allows for real-time data downloads from TMA10A and TMD90A
- Records two channels simultaneously



2017 Special Products Catalog

beha-amprobe.com

Visit our web site for full data sheets, application notes, software downloads, special promotions and more.

**The Netherlands -
Headquarters**

Science Park
Eindhoven 5110
5692 EC Son
+31 (0) 40 267 51 00
beha-amprobe.com

Germany

In den Engematten 14
D-79286 Glottertal
+49 (0) 7684 8009 - 0
beha-amprobe.de

United Kingdom

52 Hurricane Way
Norwich
Norfolk, NR6 6JB
+44 (0) 1603 25 6662
beha-amprobe.com

© 2017 Fluke Corporation
All rights reserved.
6009143A-EN

Specifications subject to
change without notice.