

**L057R..**

## Economy Series

### The range for universal applications

L057R01 / R11

### SF<sub>6</sub> gas service carts

L057 series is a real all-rounder convincing by its compact design, its user-friendly and automated gas handling. Everything is available: the practical tool box for hoses and accessories as well as the digital weighing scales integrated in the device.

The device is equipped with many special functions facilitating the maintenance of the device. In case a filter cartridge has to be exchanged it is possible to recover the SF<sub>6</sub> gas from the filter unit by means of a special function. Afterwards the air can be evacuated.

All functions are displayed on the 10" touch panel (version R01) or on the 3.6" panel (version R11). The operator can easily select the desired language, the required pressure and the vacuum units on the panel.

SF<sub>6</sub> gas handling can be quite easy.



- Devices for liquid storage of SF<sub>6</sub> gas
- SF<sub>6</sub> gas recovery down to < 1 mbar
- Automatic control and 10" touch panel (version R01)
- Reversing switch for direction of rotation
- Digital weighing scales for SF<sub>6</sub> bottles
- Residual gas recovery down to 1 mbar during filter change
- Reduction to transport pressure as integrated special function
- All versions are available with tanks which can be assembled under the device with CE marking also available with SQL and ASME approval
- The service carts can be mounted on a trailer

## For liquid storage

L057R01

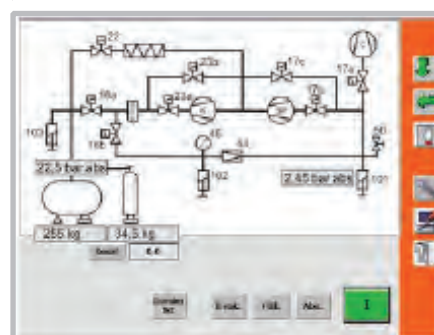
### SF<sub>6</sub> gas service cart

Operation, indication of most important process parameters and illustration of selected gas flow on 10" touch panel

Indication units selectable on the touch panel (e. g. bar / mbar/ kg)



L057R01 model with  
TÜV SÜD certified  
performance data



10" touch panel

### Technical data:

Dimensions: L 1,850 mm, W 950 mm, H 1,220 mm

Weight: 640 kg

**L057R..**

## Economy Series

**For liquid storage**

L057R11

**SF<sub>6</sub> gas service cart**

Operation via function selector switch and Start / Stop key

Indication of the most important process parameters via 3.6" panel



3,6" Panel

### Technical data:

Dimensions: L 1,850 mm, W 950 mm, H 1,220 mm

Weight: 640 kg

L057R..

## SF<sub>6</sub> gas service cart

### Standard equipment:

TM 5.0 B oilfree compressor (5.7 m <sup>3</sup> /h [at 50 Hz], 50 bar; 6.8 m <sup>3</sup> /h [at 60 Hz], 50 bar)
Oilfree suction pump for recovery of SF <sub>6</sub> (15 m <sup>3</sup> /h, final vacuum < 1 mbar)
Vacuum pump for evacuation of air (40 m <sup>3</sup> /h, final vacuum < 1 mbar)
Evaporator
Dry filter
Particle filter
Digital weighing scales for SF <sub>6</sub> bottles
5 m long storage connecting hose DN8 with coupling tongue part DN20
Fork lift provision
Frame with crane eyelets
Tool box
Fixing and steerable rollers
Different wrenches
Paint: orange (RAL 2004)
2 operating manuals in German, English or French

### Operating voltage for all service carts (3-phase current ranges to be selected):

208 - 240 V / 60 Hz	6-057SP-R011
380 - 460 V / 50 Hz or 380 - 420 V / 60 Hz	6-057SP-R012

**L057R..****Economy Series**

L057R..

**SF<sub>6</sub> gas service cart**

Mounted on a pressure tank / stowage



L057R01 with 300 l pressure tank

**Optional equipment (mounted) at an extra charge:**

	Storage capacity	Length mm	Width mm	Height mm	Net weight	Article No.
300 l / 50 bar pressure tank in accordance with EC 97/23 regulations and CE marked with electronic weight indication, fixing and steerable rollers	280 kg	1,850	950	1,725	1,050 kg	<b>B171R01L057</b>
600 l / 50 bar pressure tank in accordance with EC 97/23 regulations and CE marked with electronic weight indication, fixing and steerable rollers	580 kg	2,000	950	1,935	1,270 kg	<b>B171R02L057</b>
300 l / 50 bar pressure tank in accordance with EC 97/23 regulations and CE marked with electronic weight indication, chassis with solid tired wheels	280 kg	2,500	1,050	1,835	1,250 kg	<b>B172R01L057</b>
600 l / 50 bar pressure tank in accordance with EC 97/23 regulations and CE marked with electronic weight indication, chassis with solid tired wheels	580 kg	2,500	1,050	2,015	1,550 kg	<b>B172R02L057</b>
Stowage including 5 SF <sub>6</sub> -bottles with electronic weight indication, chassis with solid tired wheels	5 x 40 kg	2,500	1,050	2,015	1,320 kg	<b>B175R01L057</b>

L057R..

# **SF<sub>6</sub> gas service cart**

Can be mounted on a trailer with the following accessories:



Device including stowage with weighing device  
with 5 SF<sub>6</sub> bottles on a trailer B175R11L057

## **Technical data:**

Dimensions: L 4,500 mm, W 1,700 mm, H 2,280 mm
Max. admissible total weight: 2,000 kg

2 axle car trailer TÜV approved, stowage with weighing device <b>with</b> 5 SF <sub>6</sub> -bottles, tarpaulin, side and back walls opened by pneumatic springs included	<b>B175R11L057</b>
2 axle car trailer TÜV approved, stowage with weighing device <b>without</b> SF <sub>6</sub> -bottles, tarpaulin, side and back walls opened by pneumatic springs included	<b>B175R10L057</b>



**L057R..****Economy-Serie**

L057R..

**SF<sub>6</sub> gas service carts****Optional equipment (mounted) at an extra charge for all service carts of the Economy series:**

Additional price for electrical special voltage 440 - 480 V / 60 Hz 3-phase current	<b>6-057SP-R014</b>
Additional price for electrical special voltage 200 V / 50 - 60 Hz 3-phase current	<b>6-057SP-R017</b>
Additional price for electrical special voltage 210 - 240 V / 50 Hz 3-phase current	<b>6-057SP-R018</b>
Additional price for electrical special voltage 600 V / 60 Hz 3-phase current	<b>6-057SP-R019</b>
63 m <sup>3</sup> /h vacuum pump, final vacuum < 1 mbar	<b>6-057VP-R001</b>
100 m <sup>3</sup> /h vacuum pump, final vacuum < 1 mbar	<b>6-057VP-R002</b>
40 m <sup>3</sup> /h two-stage vacuum pump with exhaust filter, final vacuum < 2 x 10 <sup>-3</sup> mbar	<b>6-057VP-R004</b>
Automatic control and switching off of the individual functions (only for L057R01) (evacuation, filling, recovery of SF <sub>6</sub> )	<b>6-057AU-R001</b>
Dew point control for dry filter (only for L057R01)	<b>6-057TF-R001</b>
Dew point control for dry filter (only for L057R11)	<b>6-057TF-R011</b>
Removable sheet metal cover of the complete service cart	<b>6-057BL-R001</b>
Tarpaulin	<b>6-057KA-R001</b>
Chassis with solid tired wheels Ø 400 mm	<b>6-057FG-R001</b>

**Optional accessories at an extra charge for all Economy service carts:**

5 m long rubber hose DN20 with coupling tongue part DN20 on both ends	<b>6-1017-R050</b>
10 m long rubber hose DN20 with coupling tongue part DN20 on both ends	<b>6-1017-R100</b>
5 m long wire-braided hose DN20 with coupling tongue part DN20 on both ends	<b>6-1024-R050</b>
10 m long wire-braided hose DN20 with coupling tongue part DN20 on both ends	<b>6-1024-R100</b>
Remote control via PC, LAN connection (only for L057R01)	<b>6-0004-R215</b>
Additional operating manual on CD-ROM	<b>6-0004-R213</b>

**Spare parts kits for L057R..:**

Maintenance package for L057R.. with standard vacuum pump (40 m <sup>3</sup> )	<b>6-1048-R401</b>
Maintenance package for L057R.. with 6-057VP-R001 / R002 vacuum pump (63 / 100 m <sup>3</sup> )	<b>6-1048-R421</b>
Maintenance package for L057R.. with two-stage 6-057VP-R004 vacuum pump (40 m <sup>3</sup> )	<b>6-1048-R422</b>
Spare parts kit for compressor	<b>6-1010-R011</b>

**Packing for L057R..:**

Packing for L057R..	<b>3-751-R010-C</b>
Packing for L057R.. with 6-057FG-R001 as option (chassis)	<b>3-788-R023-C</b>
Packing for L057R.. with 6-057BL-R001 as option (sheet metal covering)	<b>3-788-R024-C</b>
Packing for L057R.. with pressure tank (steerable and fixing rollers)	<b>3-751-R011-C</b>
Packing for L057R.. with pressure tank (chassis)	<b>3-788-R011-C</b>
Packing for L057R.. with stowage and weighing device	<b>3-788-R012-C</b>
Transport pallet for L057R.. mounted on a trailer	<b>3-688-R004-C</b>