

Applications

Industry

Maintenance manager

- Corrosion in rotors and stators
- Equipment part N°
- Cable pulley/pulley slots condition
- Liquid channel inspection
- Material integrity

Assets

- Pumps
- Motors
- Gear boxes
- Compressors
- Turbines

Production

Mechanical maintenance teams

- Quality of finished goods
- Inspect bearing surface and lubrication
- Gear helix inspection

Assets

- Factory MIA goods
- Conveyors
- Roller bearings
- Production line rotating machinery
- Gear boxes

Aviation

Aircraft maintenance technician

- Inspect blades for chips or cracks
- Engine hot section contamination
- Foreign/loosened micro parts
- Leakage from lubrication lines

Assets

- Engine sections
- Airframes
- Flaps
- Turbines
- Hydraulic lines
- HP sections

Heavy duty

Industrial maintenance team

- Clogged pipelines
- Cracked industrial fluid lines
- Condition of large waste lines
- Ventilation ducting

Assets

- Sewer lines
- Industrial pipelines
- Off shore structural components
- Industrial HVAC systems

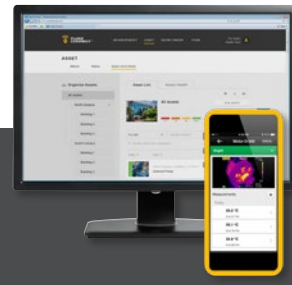
Automotive

Quality assurance manager

- Quality/reliability testing of casting goods
- Piston dome/cylinder/valve condition
- Inspect for crack, chips and contamination in HP chambers

Assets

- Casting goods
- Combustion chambers
- Engines



Preventive maintenance simplified. Rework eliminated.

Save time and improve the reliability of your maintenance data by wirelessly syncing measurements using the Fluke Connect® system.

- Eliminate data-entry errors by saving measurements directly from the tool and associating them with the work order, report or asset record
- Maximize uptime and make confident maintenance decisions with data you can trust and trace.
- Access baseline, historical and current measurements by asset

The Fluke DS703 FC is part of a growing system of connected test tools and equipment maintenance software.

Visit www.flukeconnect.com to learn more about the Fluke Connect® system.



All trademarks are the property of their respective owners. WiFi or cellular service required to share data. Smartphone, wireless service and data plan not included with purchase. First 5 GB of storage is free. Phone support details can be viewed at fluke.com/phones.

Smart phone wireless service and data plan not included with purchase. Fluke Connect is not available in all countries.

Accessories

| | |
|---|--|
| FLK-3.8MM Scope, 1M Probe, Forward View Scope | For those small, but easy to reach locations |
| FLK-5.5MM Scope, 1M Probe, Dual View Scope | A range of diameters and lengths all with the benefit of dual view |
| FLK-8.5MM Scope, 3M Probe, Dual View Scope | Identify very small cracks using fluorescent dye |
| FLK-8.5MM Scope, 1.2M Probe, Dual View Scope | Get to that hard to reach problem |
| FLK-8.5MM UV Scope, 1M Probe, Dual View Scope | For comfort and ease of use |
| Fluke FLK-9MM Scope, Forward View 20M Probe Reel | |
| Fluke DS 7XX Neckstrap | |

Gritty, industrial, expensive equipment?
 Diagnose before tear-down with the durability of Fluke
Fluke Diagnostic Videoscopes



Fluke DS701 Diagnostic Videoscope

Rugged, industrial 800 x 600 resolution diagnostic videoscope with dual view probe. Inspection camera with 7" LCD screen for accurate diagnostics in difficult to reach spaces. Adjustable LED lighting and digital zoom for quality images. Intuitive user interface with easy to navigate button technology.

| | |
|-------------------------------|---|
| Probe length | 1.2 meter (3.94 feet) |
| Type | Detachable, semi-ridged, waterproof, immersible to 1 meter or more in depth |
| Diameter | 8.5 mm (0.33 inches), optional 3.8, 5.5 and 9 mm probes available |
| Material | Elastomer coated steel |
| Lighting | Adjustable LED, one front, one side |
| Illumination | 53 Lux |
| Up is Up® Technology | Appropriate image display, regardless of the orientation of the probe, 8.5 MM, 1.2 M probe only |
| Camera | Dual view camera, forward and side |
| Resolution | 800 x 600 (480,000 pixels) |
| Still image format | JPG |
| Video recording format | AVI |
| Video output format | MPEG compression |
| Digital zoom | Adjustable from 1x to 8x zoom |
| Field of view | 68° |
| Depth of field | 25 mm to infinity |
| Video resolution | Standard |
| Minimum focus distance | 10 mm |
| Focus type | Fixed |
| Image rotation | 180° |



Fluke DS703 FC High Resolution Diagnostic Videoscope with Fluke Connect®

Rugged, high-definition industrial 1280 x 720 resolution diagnostic videoscope with Wi-Fi capability. 7" capacitive touch screen for accurate diagnostics in difficult to reach spaces. 720p resolution video recording inspection camera. Adjustable LED lighting and digital zoom for quality images.

| | |
|-------------------------------|---|
| Probe length | 1.2 meter (3.94 feet) |
| Type | Detachable, semi-ridged, waterproof, immersible to 1 meter or more in depth |
| Diameter | 8.5 mm (0.33 inches), optional 3.8, 5.5 and 9 mm probes available |
| Material | Elastomer coated steel |
| Lighting | Adjustable LED, one front, one side |
| Illumination | 53 Lux |
| Up is Up® Technology | Appropriate image display, regardless of the orientation of the probe, 8.5 MM, 1.2 M probe only |
| Camera | Dual view camera, forward and side |
| Resolution | 1200 x 720 (864,000 pixels) |
| Still image format | JPG |
| Video recording format | AVI |
| Video output format | MPEG compression |
| Digital zoom | Adjustable from 1x to 8x zoom |
| Field of view | 68° |
| Depth of field | 25 mm to infinity |
| Video resolution | 720p |
| Minimum focus distance | 10 mm |
| Focus type | Fixed |
| Image rotation | 180° |
| Streaming video | Via HDMI and Fluke Connect® |
| Wireless interface | WiFi 802.11b/g/n, Range: 33 feet (10.06 meters) |



The benefits of a videoscope are well known. But industrial inspections require a powerful diagnostic videoscope designed to stand up to the dirtiest, most harsh environments.

- High definition probe with dual-view camera
- Processing speeds that render a smooth, clear, consistent image
- 7" LCD screen for easy viewing
- Macro to micro zoom function
- Adjustable lighting to capture the best image
- Up is Up® technology for an appropriate orientation, regardless of the probe location (8.5 millimeter, 1.2 meter probe only)

Fluke Diagnostic Videoscopes put high-resolution images in the palm of your hand.

